

CABLE AND HOSE REEL LOCKING DOG REPAIR KIT

NOTE: Replaces single and double plate syle locking dog mechanism used in **older reels**.

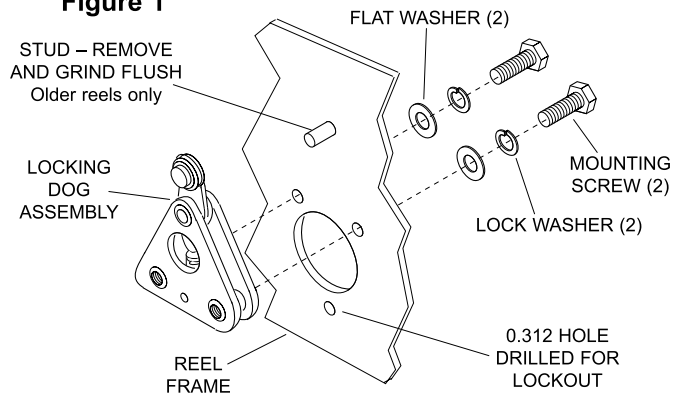
1. Lock out power source.
 - a. CABLE REELS - Turn off electrical power source. Disconnect input and output wiring.
 - b. HOSE REELS - Turn off fluid or gas source. Disconnect input and output connections.

⚠ WARNING

Do not attempt to service reel without locking out power source. Failure to disconnect all power could result in personal injury.

2. Rewind all cable/hose onto spool by manually rotation spool in counter-clockwise direction as viewed from slip ring (cable) or swivel joint (hose) side of reel. Continue to rotate spool until all spring tension is released.
3. CABLE REELS ONLY - Remove junction box cover, if not previously removed.
4. Using 3/16" Allen wrench, loosen set screw in main shaft clamping nut. Support spool and spin nut off shaft.
5. Remove entire spool and spring assembly from frame.
6. Remove screw securing locking dog selector plate to frame.
7. Slide locking dog assembly off stud. Discard.
8. Remove stud from frame and grind flush. See Figure 1.

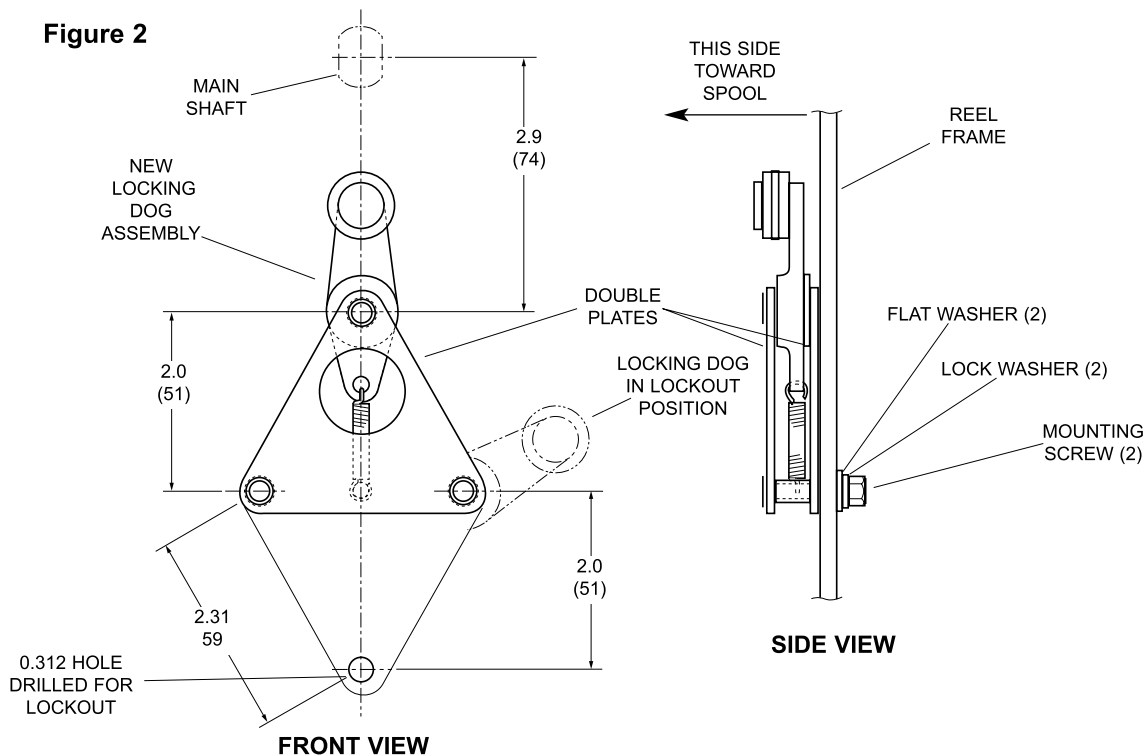
Figure 1



9. If locking dog disengagement (lockout) is desired, drill a .312 dia. hole on centerline of frame and 2.0" (51mm) below mounting holes of dog assembly. See Figure 2.
10. Position new Locking Dog assembly as shown and secure with flat washers, lock washers and cap screws. Tighten both screws securely. Check dog for freedom of operation.
11. Reassemble reel, following steps 1-5 in reverse order.
12. Check to make sure that locking dog performs satisfactorily.

Place reel back in service by following **INSTALLATION AND MAINTENANCE INSTRUCTIONS** supplied with reel.

Figure 2



CABLE AND HOSE REEL LOCKING DOG REPAIR KIT

NOTE: Replaces locking dog mechanism used in **newer reels** (no stud).

1. Relieve spring tension on dog before removing locking dog assembly.
2. Remove locking dog from the reel frame by removing mounting screws and washers.
3. Position new locking dog assembly as shown (Figure 3) and secure with flat washers, lock washers and cap screws. Tighten both screws securely.
4. Check to make sure that locking dog performs satisfactorily.

