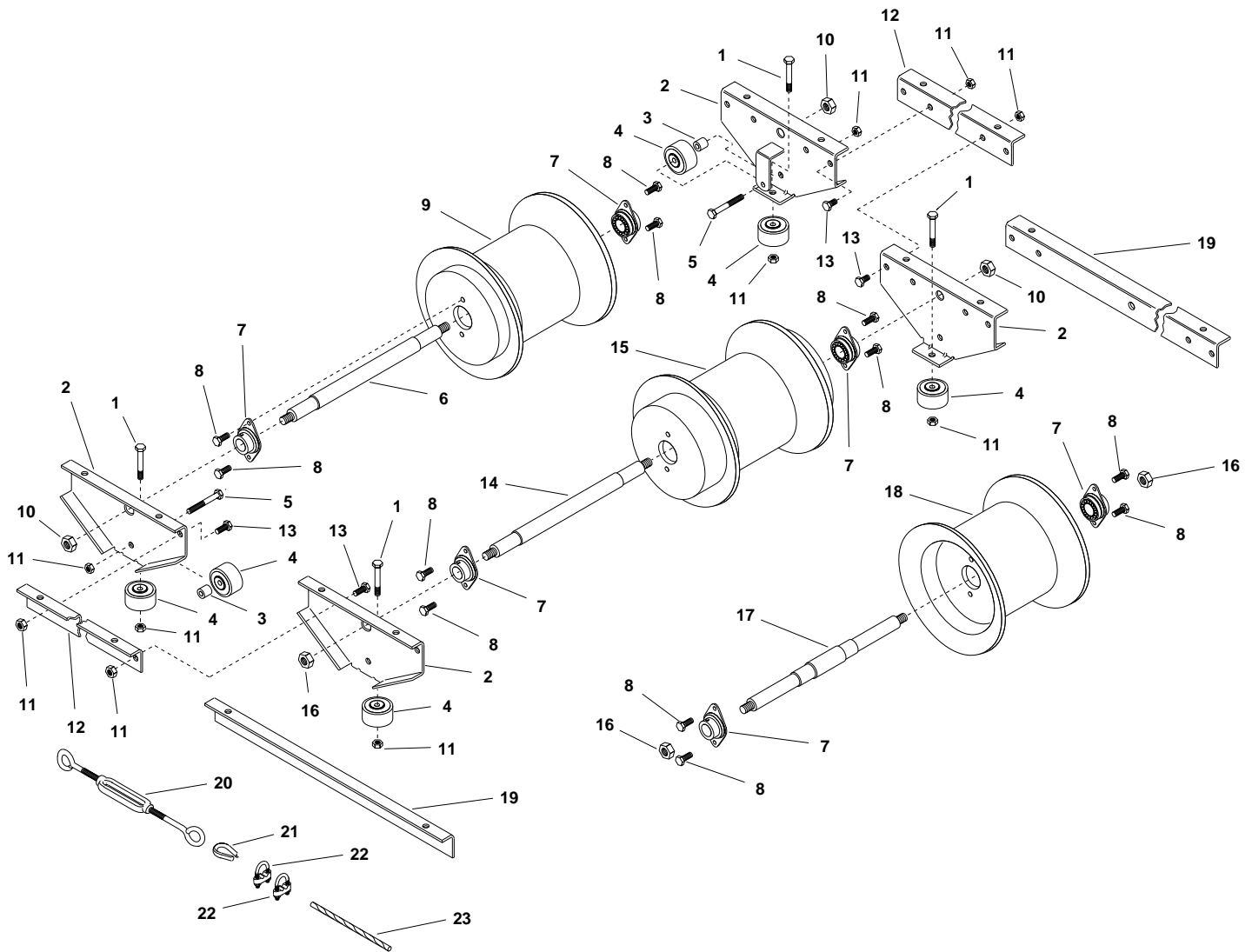


222 & 222R POWERTRAK CARRIAGE

REPLACEMENT PARTS



ITEM	DESCRIPTION
1	Hex Hd. Machine Bolt, 5/16-18 x 1.5 lg.
2	Roller Bracket
3	Spacer
4	Wheel
5	Hex Hd. Machine Bolt-5/16-18 x 2.5 lg.
6	Guide Drum Shaft
7	Bearing
8	Hex Hd. Machine Bolt, 1/4-20 x 0.5 lg.
9	Guide Drum Assembly
10	ESNA Nut, 1/2-13
11	ESNA Nut, 5/16-18
12	Angle

ITEM	DESCRIPTION
13	Hex Hd. Machine Bolt, 5/16-18 x 5/8 lg.
14	Support Drum Shaft
15	Support Drum Assembly
16	ESNA Nut, 7/126-14
17	Intermediate Shaft
18	Intermediate Drum Assembly
19	Angle Connector
20	Turn Buckle - Double Eye Type
21	Thimble, 1/4"
22	Wire Rope Clips, 1/4"
23	Wire Rope

NOTE: Always specify serial number and model number of carriage assembly when ordering parts.



GLEASON REEL CORP.
P.O. BOX 26 • 600 South Clark St.
Mayville, WI 53050-0026
Phone: 920-387-4120 • FAX: 920-387-4189