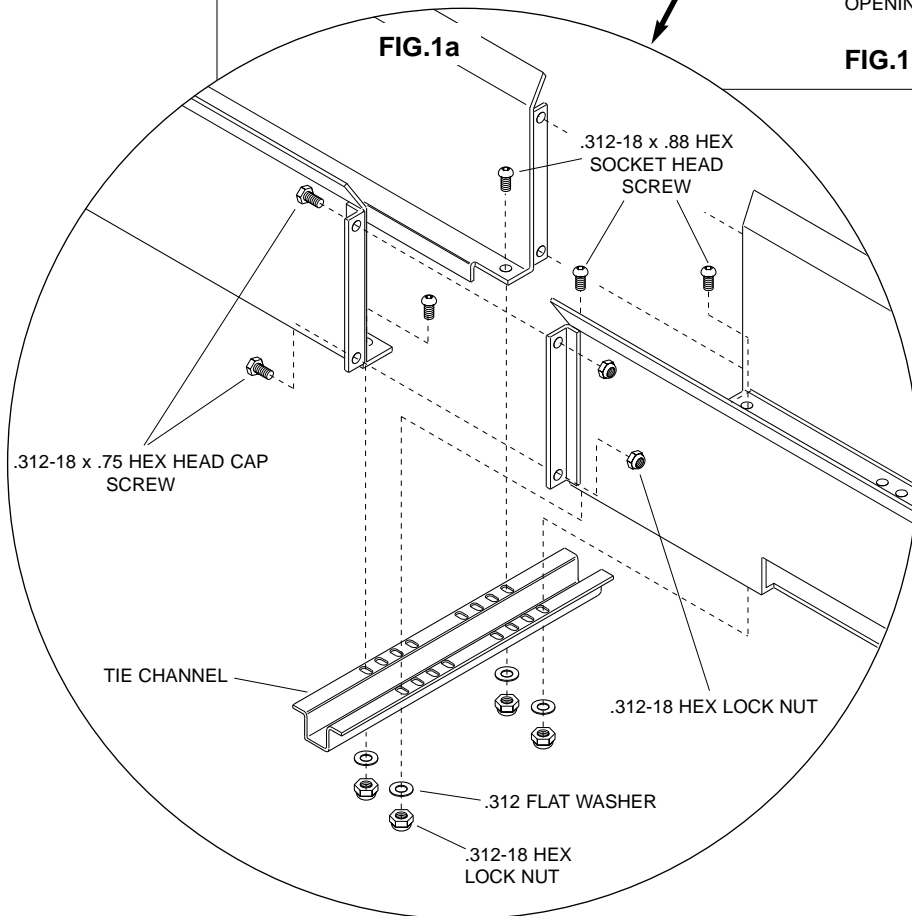
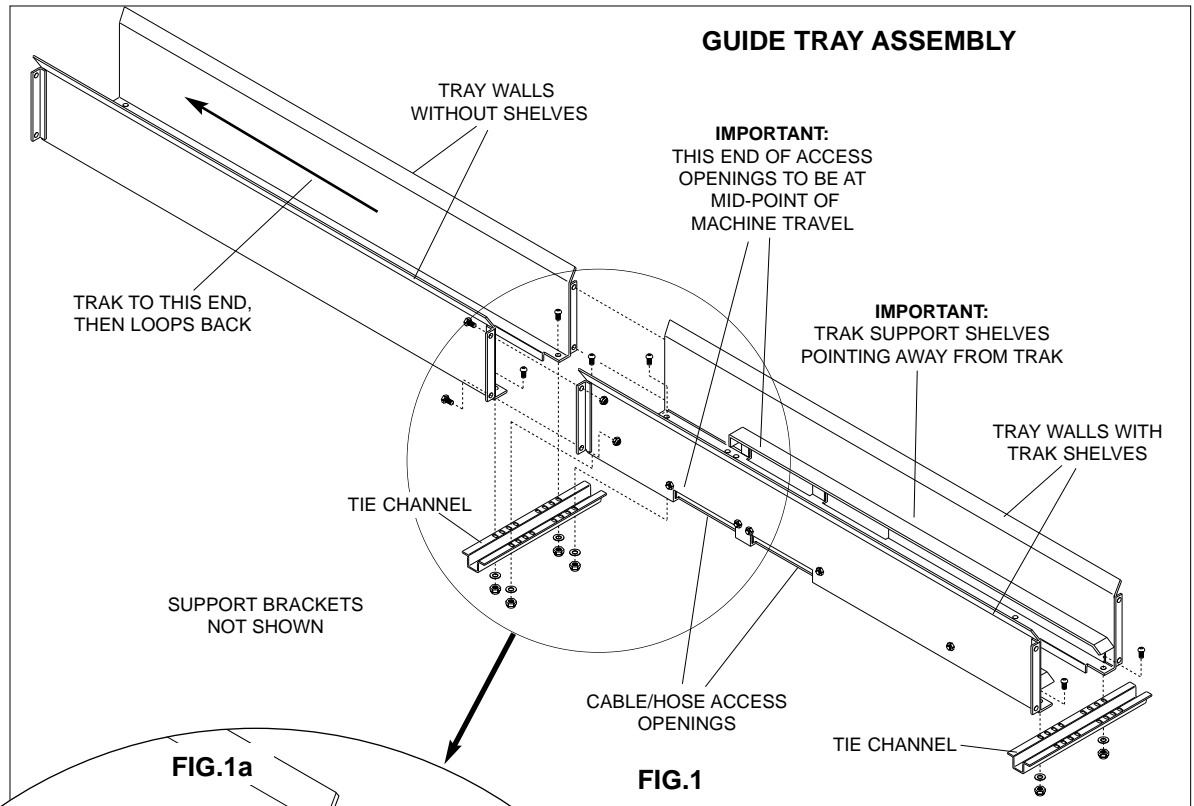


# GUIDE TRAY

for single direction PowerTrak

## INSTALLATION INSTRUCTIONS



**NOTE:**  
Customer must provide support at every tray joint beneath tie channels (60.00"[1524mm] spacing).

It is recommended that guide tray be assembled on support brackets. Lifting assembled tray could damage tray.

**STEP 1:** Determine direction trak will travel. **NOTE:** Your installation may be opposite that shown in these instructions. Position two tray walls **without shelves** near travel midpoint toward trak end of tray. Position tray walls **with access openings and trak support shelves** to opposite end of tray, shelves pointing away from trak. (See Fig. 1.) **NOTE:** Only tray sections with access openings have trak support shelves. Remainder of tray sections on that end of tray assembly have rollers.

**STEP 2:** Attach tray walls to tie channels using .312-18 x .88 lg. hex socket head screws, flat washers and lock nuts. Nominal inside tray width is 0.25" greater than outside width of trak link. Fasten tray sides together using .312-18 x .75 lg. hex head cap screws and lock nuts. (See Figs. 1 & 1a.) At this time, assemble only above two sections (four walls, three tie channels). **DO NOT** fully tighten screws .

STEP 3: Attach additional tray walls **without rollers** to trak end of assembled tray sections and tray walls **with rollers** to opposite end. (See Fig. 2). Typically, the quantity of tray sections extending from the midpoint is equal in both directions. Short tray sections, if any, go at extreme ends. **DO NOT** fully tighten screws at this time.

STEP 4: Align tray sections so that tray assembly is straight, all walls are parallel and all joints are flush (no bumps). **Securely tighten all bolts used in assembly.**

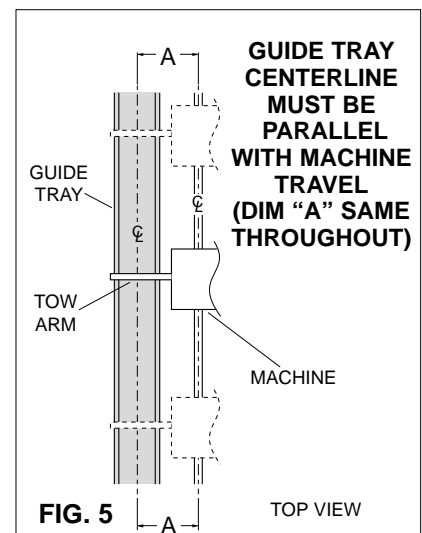
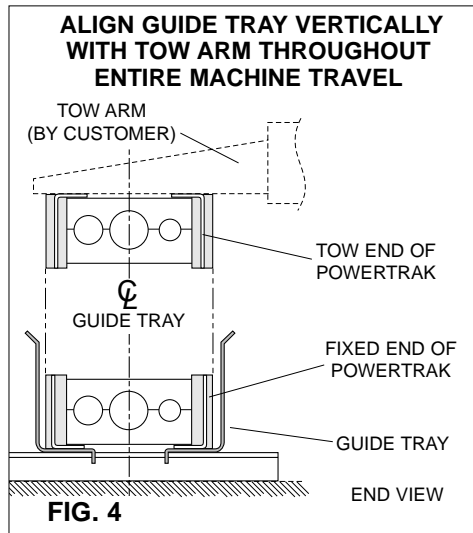
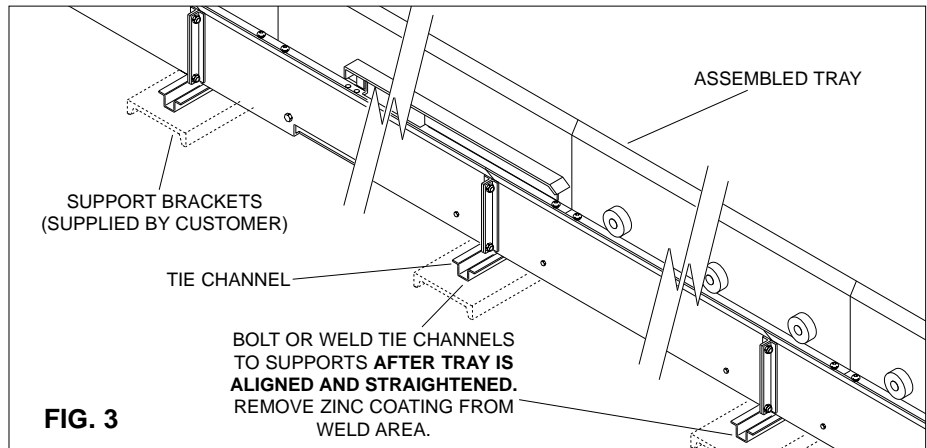
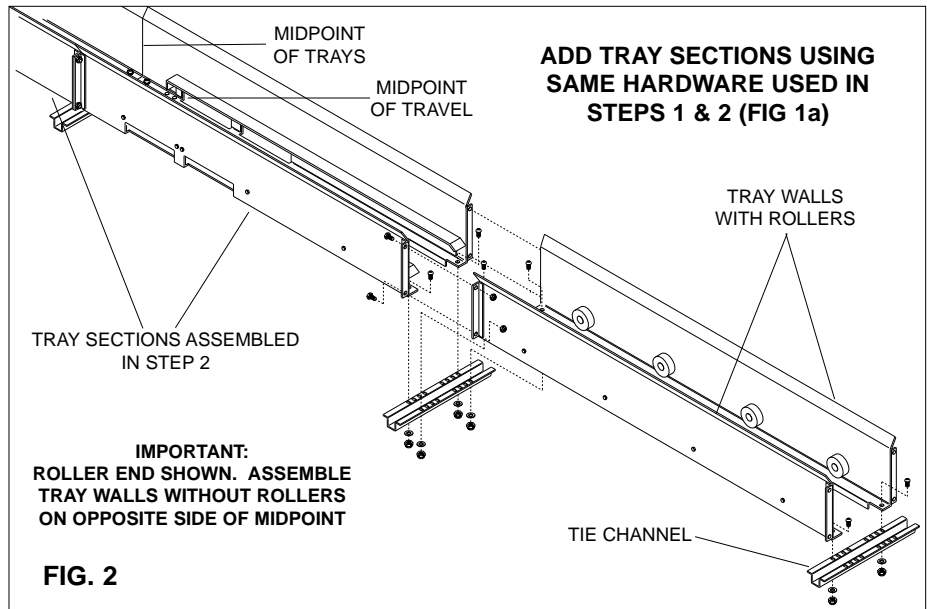
The entire guide tray installation must be provided with support brackets (by customer) at every joint (Fig. 3).

**NOTE:**  
**Guide tray must be supported level and straight.**

STEP 5: Adjust guide tray so it is parallel to machine travel and so that tow arm (tow end mounting point of PowerTrak) is plumb with tray centerline throughout entire machine travel. (See Figs 4 & 5). Reposition tray as needed.

STEP 6: Shim between support brackets and tie channels, if necessary, and securely bolt or weld tie channels to support brackets.

STEP 7: Install PowerTrak as described in separate PowerTrak Installation and Maintenance Instruction sheet.



**GLEASON REEL CORP.**  
 P.O. Box 26 • 600 South Clark St.  
 Mayville, WI 53050  
 Phone: 920-387-4120 • FAX: 920-387-4189