

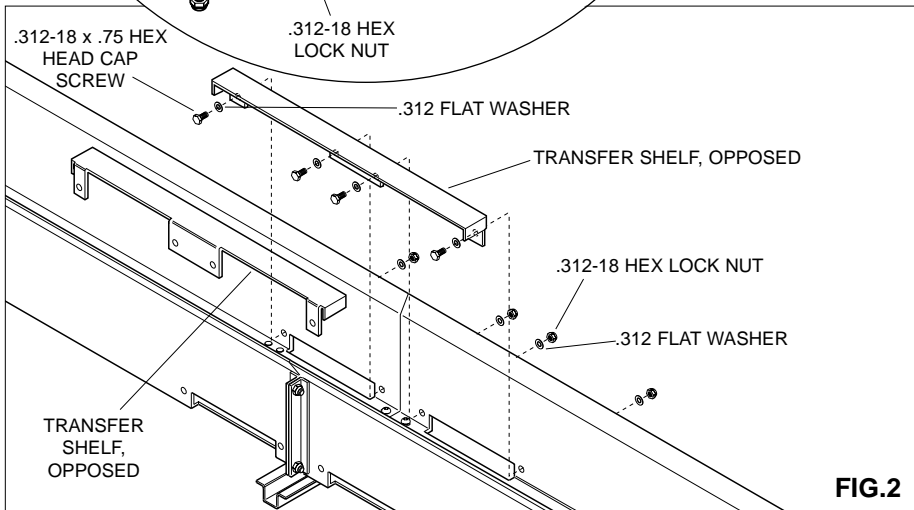
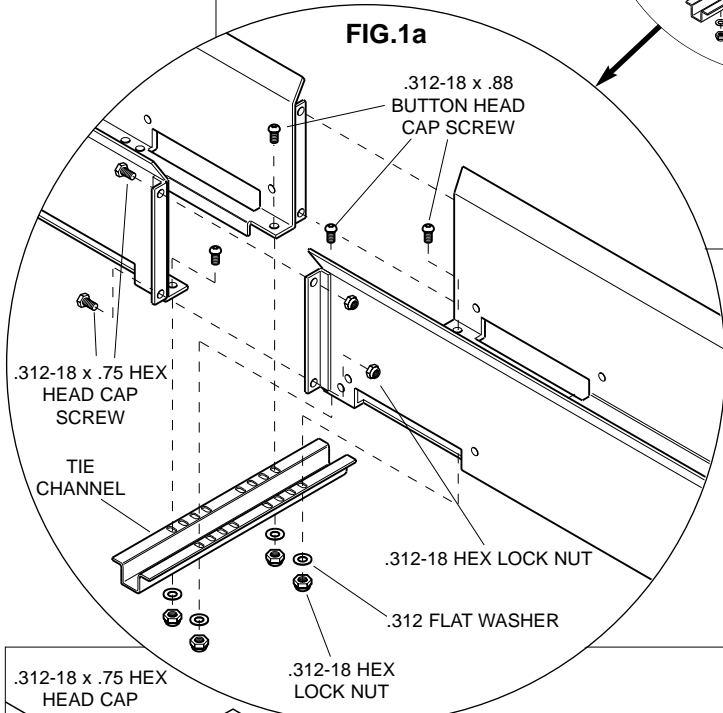
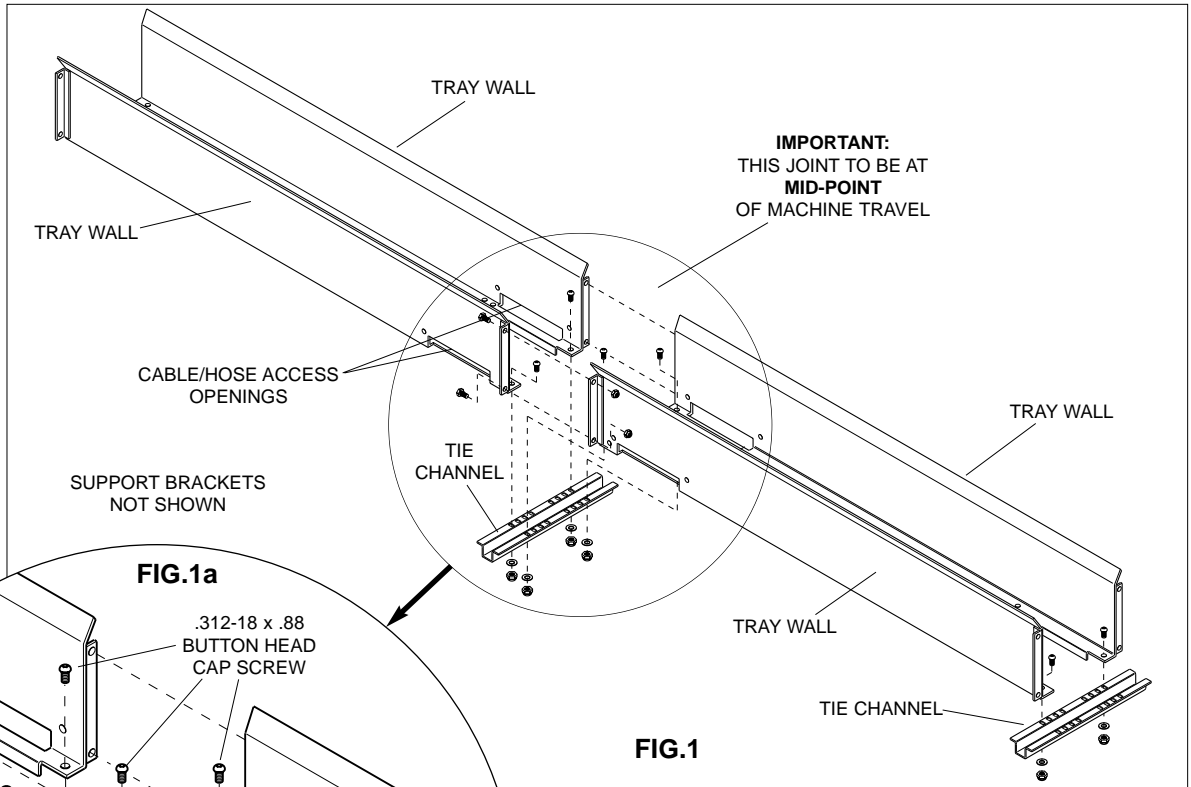
GUIDE TRAY

for opposed PowerTraks

INSTALLATION INSTRUCTIONS



GUIDE TRAY ASSEMBLY



NOTE:
Customer must provide support at every tray joint beneath tie channels (60.00" [1524mm] spacing).

It is recommended that guide tray be assembled on support brackets. Lifting assembled tray could damage tray.

STEP 1: Position four tray walls with access openings at mid-travel (Fig 1).

STEP 2: Attach tray walls to tie channels using .312-18 x .88 long button head cap screws, flat washers and lock nuts. Nominal inside tray width should be 0.25" greater than outside width of trak links. Fasten tray sides together using .312-18 x .75 long hex head cap screws and lock nuts. (See Figs 1 & 1a.) **DO NOT fully tighten screws and nuts until tray has been fully aligned and leveled. See steps 5 – 7.**

STEP 3: Attach transfer shelves to inside of tray walls using .312-18 x .75 long hex head cap screws, flat washers and lock nuts (Fig. 2).

STEP 4: Attach additional tray walls (without cable/hose access slots) and tie channels to each end of assembled tray sections (Fig 3). Typically, the quantity of tray sections extending from the access trays is equal in both directions. Short tray sections, if any, go at extreme ends. As with other joints, **DO NOT** fully tighten screws at this time.

STEP 5: Align tray sections so that tray assembly is straight, all walls are parallel and all joints are flush (no bumps). **Securely tighten all bolts used in assembly.**

The entire guide tray installation must be provided with support brackets (by customer) at every joint (Fig. 4).

NOTE:

Guide tray must be supported level and parallel with machine travel.

STEP 6: Adjust guide tray so it is parallel to machine travel and so tow arm (tow end mounting point of PowerTrak) is plumb with tray centerline throughout entire machine travel (Figs 5 & 6). Reposition tray as needed.

STEP 6: Shim between support brackets and tie channels, if necessary, and securely bolt or weld tie channels to support brackets.

STEP 7: Install PowerTrak as described in separate PowerTrak Installation and Maintenance Instruction sheet.

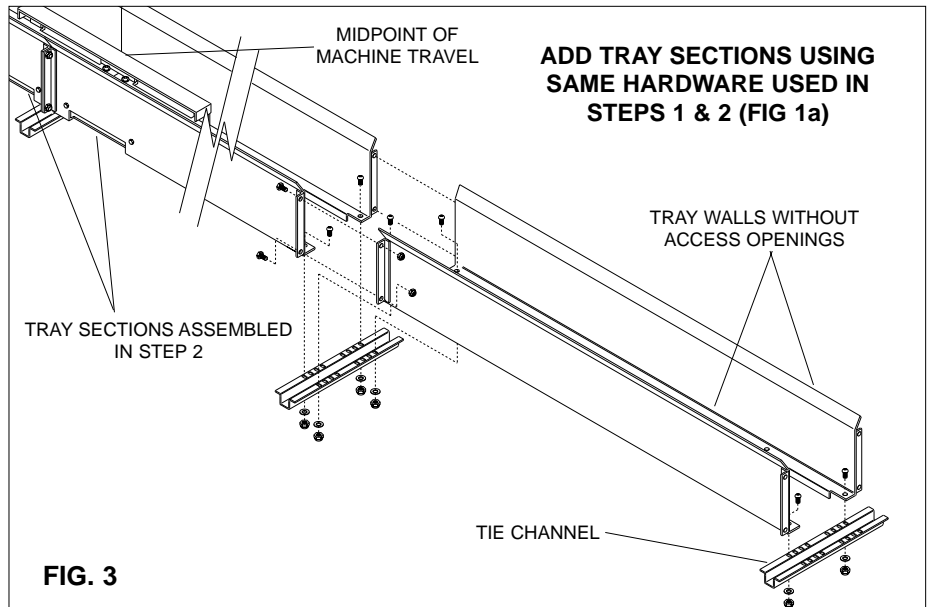


FIG. 3

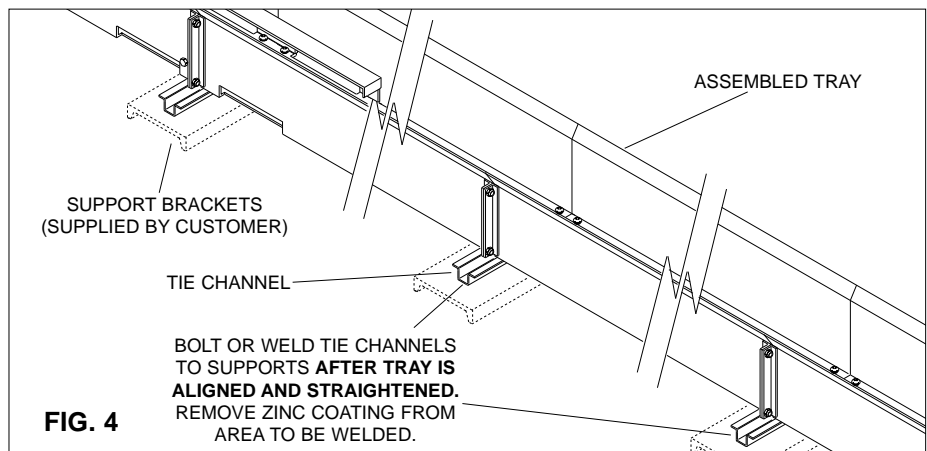


FIG. 4

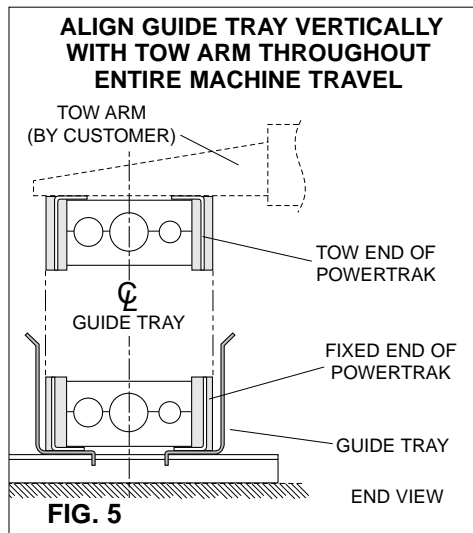


FIG. 5

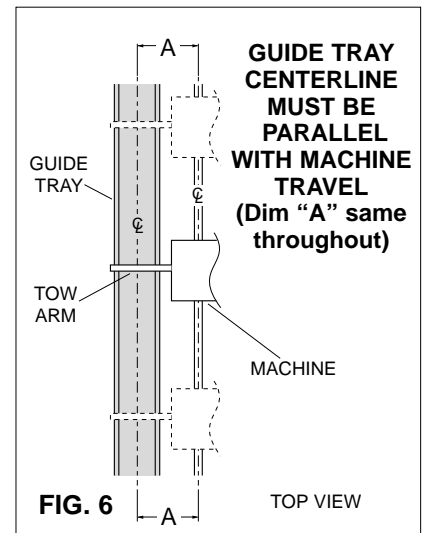


FIG. 6



GLEASON REEL CORP.
P.O. Box 26 • 600 South Clark St.
Mayville, WI 53050
Phone: 920-387-4120 • FAX: 920-387-4189