

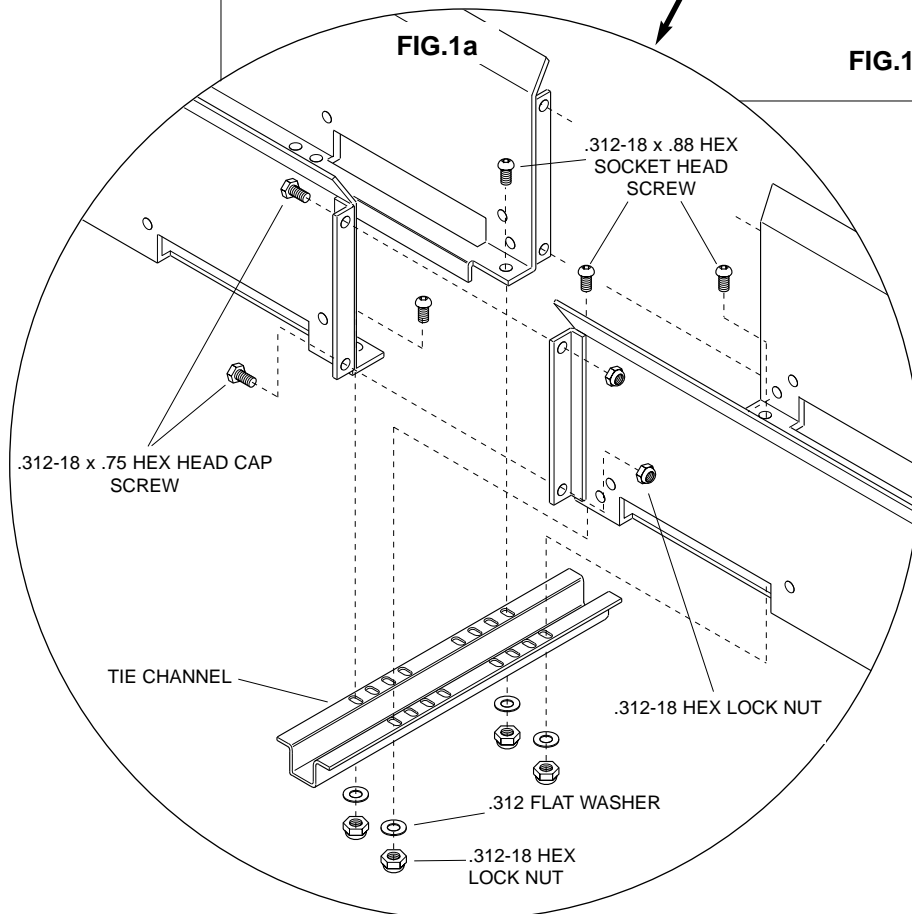
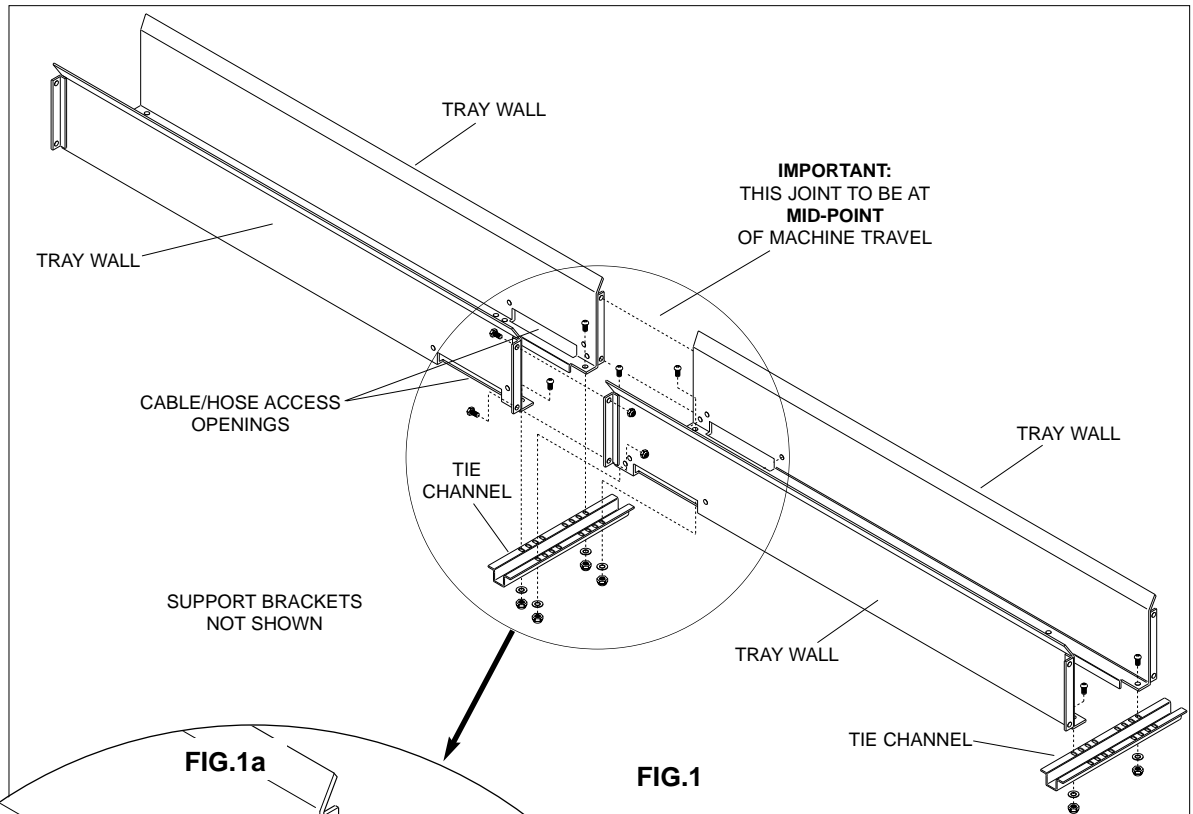
GUIDE TRAY & 215G CARRIAGE

for opposed PowerTraks

INSTALLATION INSTRUCTIONS



GUIDE TRAY ASSEMBLY



NOTE:

Customer must provide support at every tray joint beneath tie channels (60.00" [1524mm] spacing).

It is recommended that guide tray be assembled on support brackets. Lifting assembled tray could damage tray.

STEP 1: Position four tray walls with access openings at mid-travel as shown in Fig 1.

STEP 2: Consult GENERAL ARRANGEMENT DRAWING for proper inside tray width. Attach tray walls to tie channels using .312-18 x .88 lg. hex socket head screws, flat washers and lock nuts. Fasten tray sides together using .312-18 x .75 lg. hex head cap screws and lock nuts. (See Figs 1 & 1a.) **DO NOT** fully tighten screws and nuts at this time. **DO NOT** anchor tie channels to customer supplied support brackets at this time. All bolts will be tightened and tie channels will be fastened to supports after entire tray is assembled and carefully aligned.

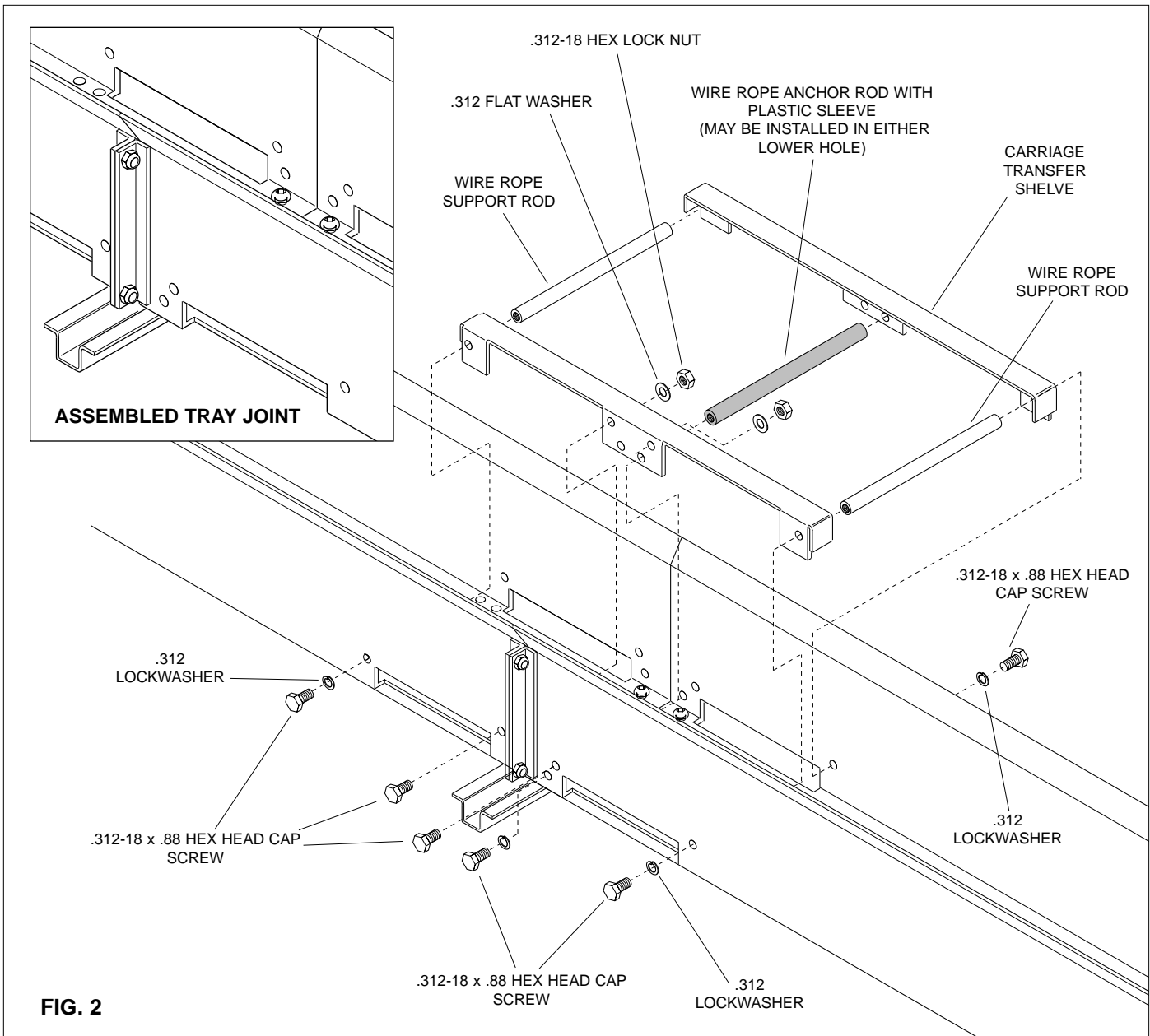


FIG. 2

STEP 3: Install carriage transfer shelves, wire rope support rods and wire rope anchor rod with plastic sleeve at cable/hose access tray joint. (See Fig 2). Be sure there is a **flat washer** between lock nut and inside of transfer shelf and a **lock-washer** on the .312-18 x .88 cap screws that screw into the rods. **DO NOT** fully tighten screws until tray is assembled and aligned.

STEP 4: Attach additional tray walls (without cable/hose access slots) and tie channels to each end of assembled tray sections. (See Fig 3). Typically, the quantity of tray sections extending from the access trays is equal in both directions. Short tray sections, if any, go at extreme ends. Consult the General Arrangement Drawing for correct overall length. As with other joints, **DO NOT** fully tighten screws at this time.

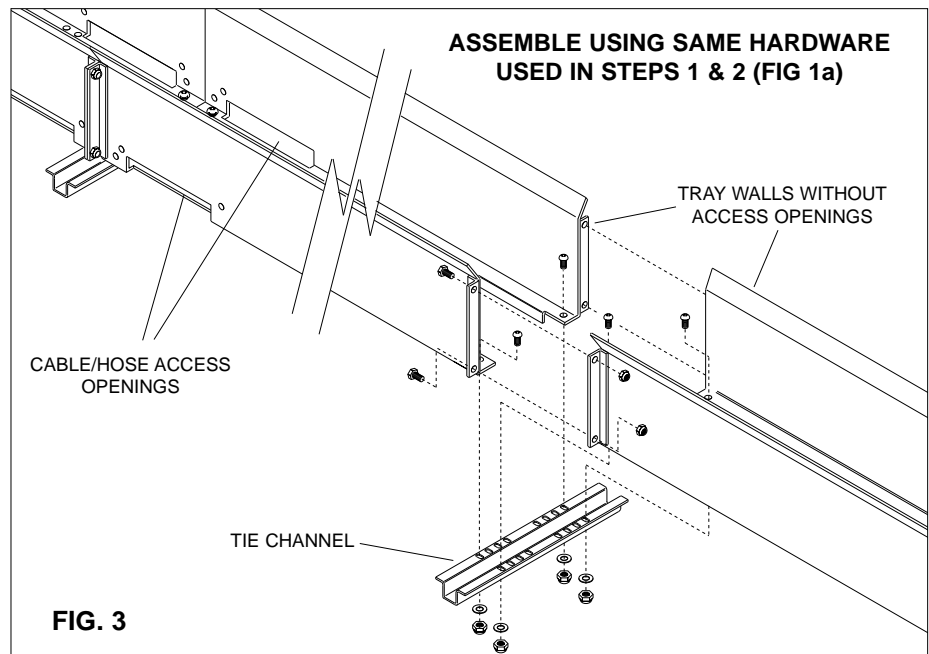


FIG. 3

STEP 5: Align tray section so that tray assembly is straight, all walls are straight (no "cork-screw") and all joints are flush (no bumps). **Securely tighten all bolts used in assembly.**

The entire guide tray installation must be provided with support brackets (by customer) at every joint (Fig 4).

NOTE:
Guide tray must be supported level and straight.

STEP 6: Adjust guide tray so it is parallel to machine travel and so that tow arm (tow end mounting point of PowerTrak) is plumb with tray centerline throughout entire machine travel. (See Figs 5 & 6). Check positioning as shown on General Arrangement Drawing and reposition tray as needed.

STEP 7: Shim between support brackets and tie channels, if necessary, and securely bolt or weld tie channels to support brackets.

WARNING

This movable carriage may present a drop hazard when operated in elevated locations. It is recommended that a metal stop be installed at each end of the support tray or rails to prevent the carriage from rolling beyond the ends of the support should a wire rope or chain fail.

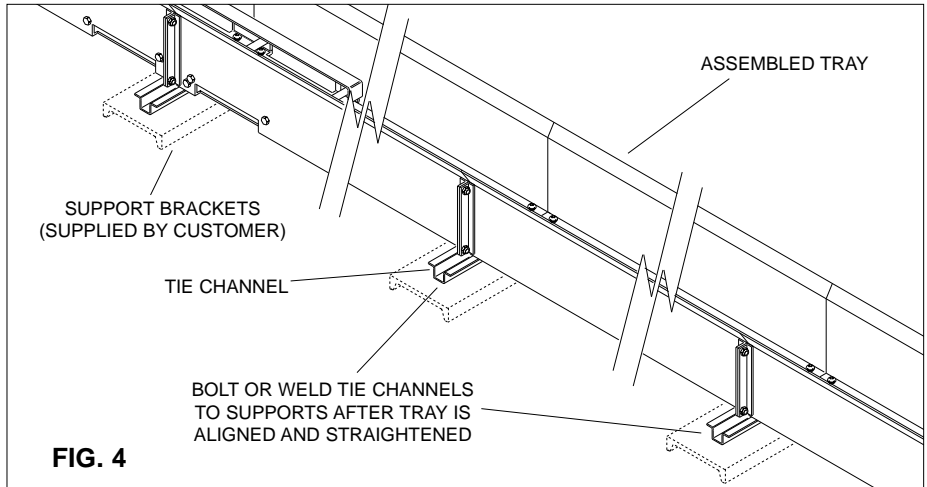


FIG. 4

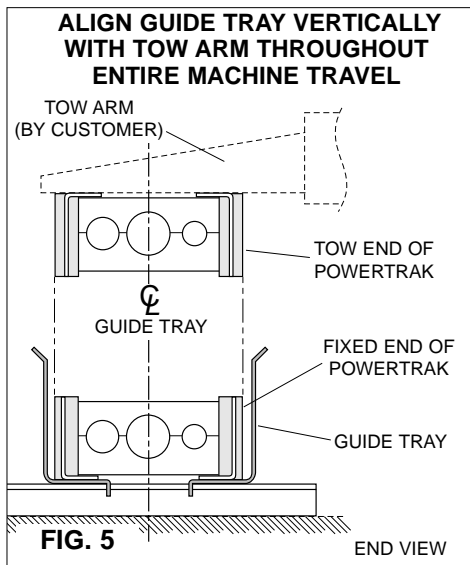


FIG. 5

END VIEW

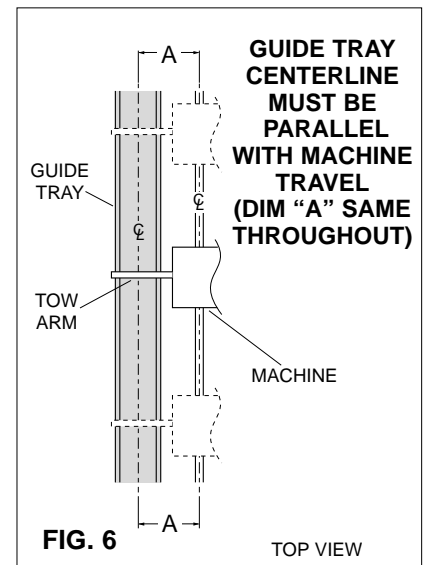


FIG. 6

TOP VIEW

CARRIAGE ASSEMBLY

The carriage lies on the bottom portion(s) of the POWERTRAK and supports the top portion(s) of the POWERTRAK. It is recommended that the carriage be assembled within the guide tray following trak assembly but with tow end detached and trak laid flat. See POWERTRAK ASSEMBLY INSTRUCTIONS.

Carriage sections are typically provided preassembled in 60" (1524mm) lengths. Other lengths, if any, go on ends.

STEP 1: Assemble carriage sections using splice angles, .312-18 x .63 long hex head cap screws, flat washers, and .312 locknuts as shown in Fig 7. Securely tighten all nuts. Be sure finished length of carriage is same as shown on General Arrangement Drawing.

STEP 2: Attach sheave assembly to each end of assembled carriage as shown in Fig 8 using same size bolts, washers, and locknuts used in STEP 1.

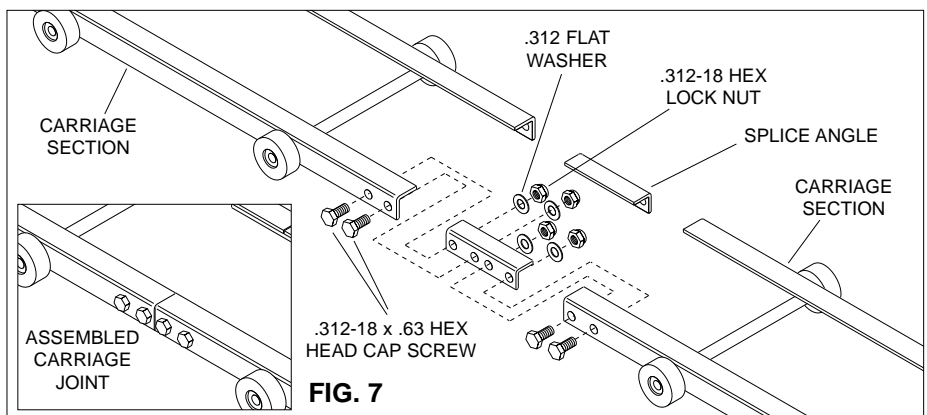


FIG. 7

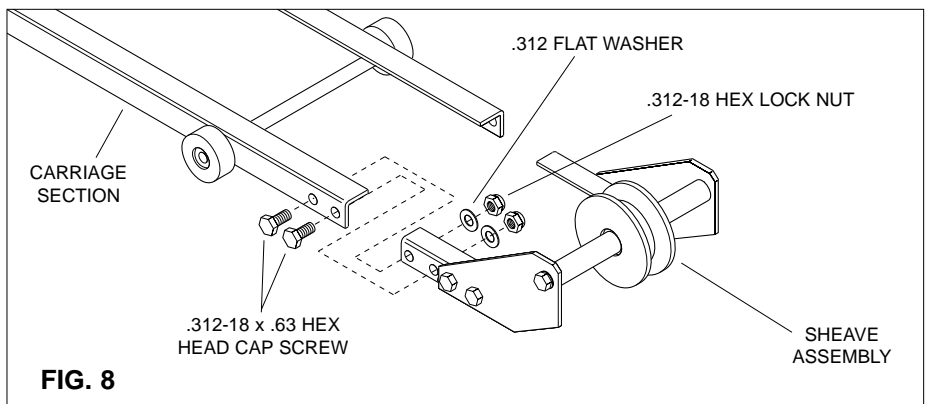


FIG. 8

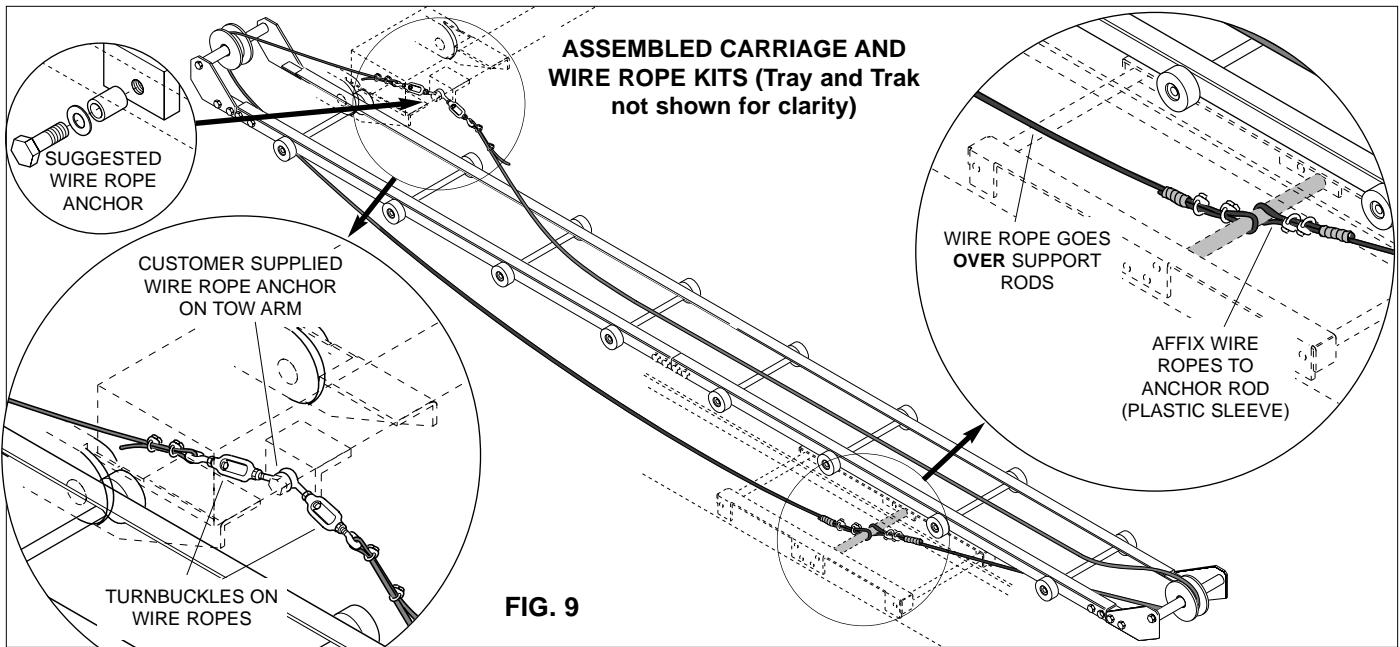


FIG. 9

STEP 3: Attach wire ropes to anchor rod (center rod with plastic sleeve) on carriage transfer shelves in guide tray. (See Fig 9). Run wire ropes **over** support rods, beneath carriage, around sheaves at both ends of carriage assembly and up to anchor on tow arm. Attach the turnbuckles to tow arm as shown. Adjust length of turnbuckles to 12" (305mm) overall. **DO NOT PULL WIRE ROPES TIGHT AT THIS TIME.**

STEP 4: Attach tow end of PowerTrak to tow arm. Refer to PowerTrak INSTALLATION AND MAINTENANCE INSTRUCTIONS.

STEP 5: With PowerTrak attached to

tow arm, move machine (tow arm) to extreme end of travel (either end).

STEP 6: Center carriage within loops made by POWERTRAK. (See Fig 10). Dimension "A" must be equal on both ends. **NOTE: The wire ropes must lay in a straight path above and below the carriage.**

STEP 7: Loosen wire rope clamps at turnbuckles and adjust until carriage maintains position in Step 5. Do not use turnbuckles to adjust wire rope at this time. Tighten clamps.

STEP 8: Run tow arm to extreme opposite end of travel. Check location of carriage and use turnbuckles to adjust wire ropes as needed. **DO NOT OVER TENSION WIRE ROPES.**

Wire rope should have enough slack to lay **under** portion of trak that lies on carriage. Over tensioning will cause ends of carriage to raise at extreme end of machine travel, placing undue strain on carriage and wire ropes and causing possible damage to unit.

STEP 9: Once the wire rope lengths have been verified by operating the system one complete cycle WITH POWERTRAK INSTALLED, cut off excess wire rope 3.0" (76mm) beyond the clips and tape end onto itself.

STEP 10: Verify travel capacity and operation of trak and carriage. Consult Gleason Reel Corporation or your Gleason Representative if you have questions or problems.

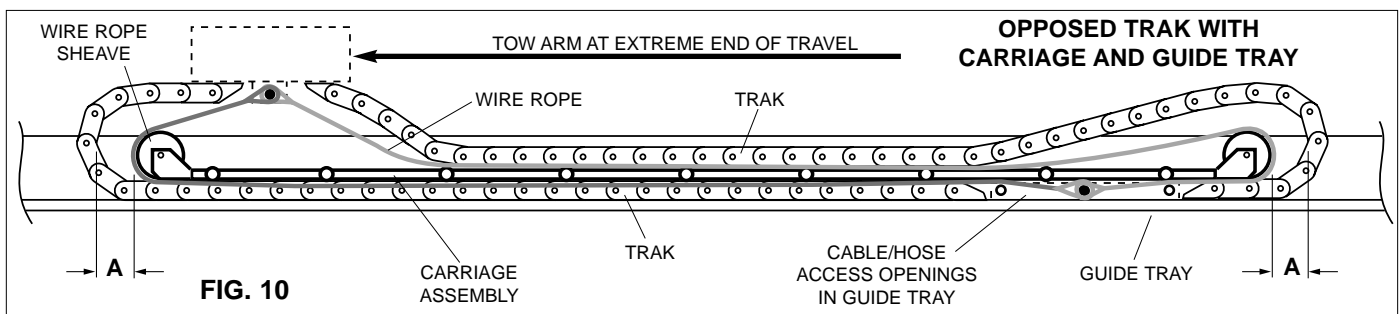


FIG. 10



GLEASON REEL CORP.
P.O. Box 26 • 600 South Clark St.
Mayville, WI 53050
Phone: 920-387-4120 • FAX: 920-387-4189