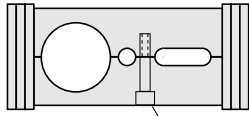
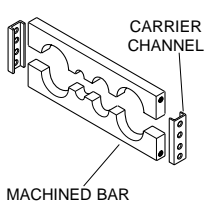


# CARRIER OPTIONS

## TYPE BC MACHINED BAR CARRIER

**Most efficient carrier design available.** Machined bar provides maximum protection for cables and hoses in PowerTrak® by placing each, regardless of size, on a common centerline. Removable two-piece bar allows easy access. Standard material is aluminum. Surface hardened aluminum and nylon with steel reinforcing rods are also available. Consult factory for details.

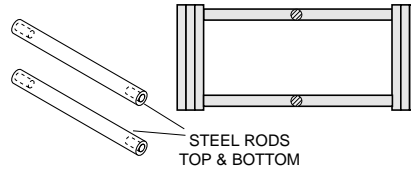


Carriers greater than 12" wide receive central fastener to minimize deflection.

AVAILABLE ON  
Types 25G,  
28G, 35G, 45G

## TYPES SR & XR STEEL ROD CARRIER

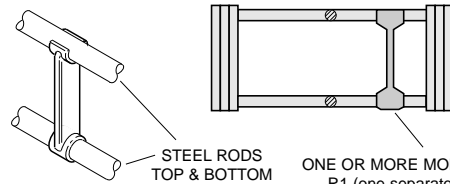
Provides basic support for cables and hoses. Steel rods are economical, light weight and are easily removed for cable/hose access. Type XR provides over 1/2" additional clearance between rods.



AVAILABLE ON  
Types 25G, 28G,  
35G, 45G  
(XR on type  
45G only)

## TYPE R1 & X1 REMOVABLE ROD CARRIER with NYLON SEPARATORS

Tough molded nylon separators provide partitions to prevent cable/hose entanglement and allow conductor grouping. One or more separators may be used as needed. Spacing of separators adjustable along complete length of rods.

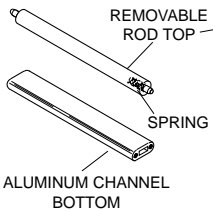


AVAILABLE ON  
Types 25G, 28G,  
35G, 45G  
(X1 on type  
45G only)

ONE OR MORE MOLDED NYLON SEPARATORS.  
R1 (one separator) shown. R2 includes two separators, R3 three separators, etc.

## TYPE RR REMOVABLE ROD CARRIER

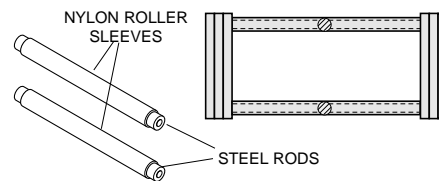
Sold as a set, the removable rod, or "quick access" carrier, features a removable ROLLING rod on top and an aluminum channel on the bottom. The rod is spring-loaded for quick removal using a standard screwdriver and is securely fixed when in use. The rolling rod reduces wear on cables/hoses. Type RR carriers are limited to a width of 10".



AVAILABLE ON  
Types 25G,  
28G, 35G, 45G

## TYPES RN & XN STEEL ROD CARRIER with NYLON SLEEVES

Nylon sleeves roll when in contact with jacketed cable and hoses, increasing useful life. Type XN, with over 1/2" of additional clearance between rods, provides for greater capacity than type RN carrier.

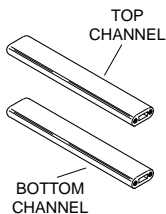


AVAILABLE ON  
Types 25G, 28G,  
35G, 45G  
(XN on type  
45G only)

## TYPES AC/ A1

" ALUMINUM 7<5 BB9 @75 FF-9F

Channel carriers feature a wide support area and light weight. Four-point fastening on each channel creates an extremely rigid and stable PowerTrak®, rivaling welded carriers. Types A1 (A2, A3, etc.) includes molded nylon separator(s) which may be positioned to prevent cable/hose entanglement and allow grouping of various types of conductors.

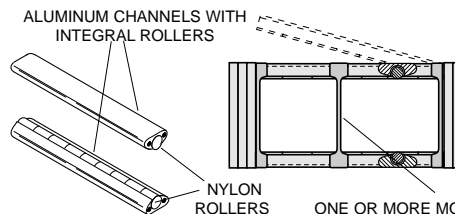


ONE OR MORE MOLDED NYLON SEPARATORS.  
A1 (one separator) shown.  
A2 includes two separators,  
A3 three separators, etc.

AC & A1  
AVAILABLE ON  
Types 25G,  
28G, 35G, 45G

## TYPES RB, RB1, TRB & TR1 (patented) ALUMINUM CHANNEL CARRIER with NYLON ROLLERS. TWIST OUT or FULLY BOLTED.

The ultimate carrier. Cable and hose moves smoothly on top and bottom nylon rollers. Optional Twist out design eases cable and hose installation.. Tough nylon retainers at both ends of strong aluminum channel and roller assemblies provide superior rigidity and stability.



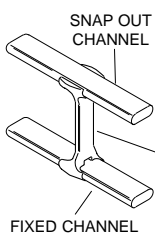
AVAILABLE ON  
.....Type  
45G only

ONE OR MORE MOLDED NYLON SEPARATORS.  
RB1 (one separator) shown. RB2 includes two separators, RB3 three separators, etc.

## .....TYPES TB/ T1

### SNAP OUT ALUMINUM CHANNEL CARRIER

One channel snaps out for quick access to cables/hoses. Type T1 (T2, T3, etc.) include tough, break resistant nylon separator(s) which may be easily positioned where needed on the channels.

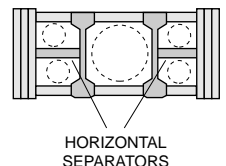


ONE OR MORE MOLDED NYLON SEPARATORS.  
T1 (one separator) shown.  
T2 includes two separators,  
T3 three separators, etc.

TB & T1  
AVAILABLE ON  
Types 25G,  
28G, 35G, 45G

## CUSTOM DESIGNED CARRIERS WITH HORIZONTAL SEPARATORS

Horizontally divided carriers are desirable when very large and very small cables are mixed within the carrier or when there are numerous small cables/hoses. Consult factory for more information.



HORIZONTAL SEPARATORS