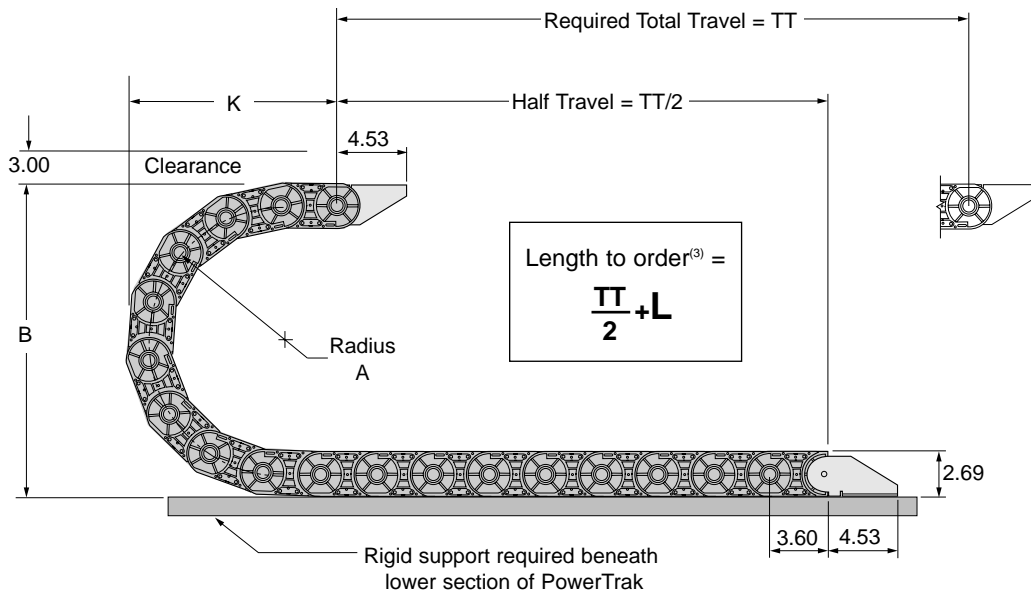


28G

GLEASON PowerTrak[®] GRP

- HEAVY DUTY DESIGN AND CONSTRUCTION
- SIDE CHAIN IS GLASS FIBER REINFORCED NYLON
- VARIETY OF CARRIER STYLES & SIZES
- RADII "A" AVAILABLE 4.19", 5.45", 6.63" & 8.40"
- TOTAL TRAVEL = 18.0 FT. (1)
- TOTAL TRAVEL W/GUIDE TRAY = 300 FT. (2)
- TOTAL TRAVEL W/GUIDE TRAY & CARRIAGE = 400.0 FT. (2)



28G Dimensions

Inches unless otherwise indicated

RADIUS A	HEIGHT B	MINIMUM K	CURVE L ⁽⁴⁾
4.19	11.06	7.95	1.5 ft.
5.45	13.58	10.24	2.0 ft.
6.63	15.94	12.56	2.5 ft.
8.40	19.49	14.55	3.0 ft.

NOTES:

- (1) Total Travel is nominal, based on standard travel with cable/hose package weight of 0.5 lb/ft., and may vary with environment. GREATER TRAVELS CAN BE ACHIEVED if PowerTrak is allowed to glide within a guide tray.
- (2) GREATER TRAVELS IN TRAYS CAN BE ACHIEVED. Consult the factory.
- (3) For standard travel, i.e. two-way payout as pictured above.
- (4) L= Minimum length in FEET to form PowerTrak curve.
- (5) Indicates width in inches.

WEIGHT FORMULA, side chains and carriers only: $1.32 + (C \times 0.12) = \text{weight (lbs/ft.)}$. C = carrier width in inches.

For total weight: $\text{Trak weight (lbs/ft.)} + \text{cable/hose weight (lbs/ft.)} \times \text{Trak length (ft.)}$

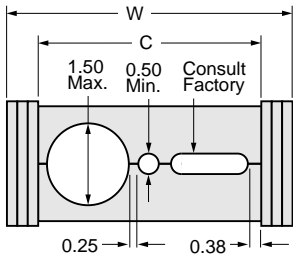
Model Number Explanation

POWERTRAK TYPE	CARRIER TYPE	RADIUS	CARRIER WIDTH ⁽⁵⁾
PT 28G	BC*	5.4	10
	BC*, T1, AC, SR, R1, RN, A1, TB, RR**	4.19", 5.45", 6.63", 8.40"	4, 6, 8, 10, 12

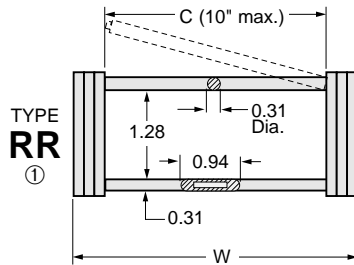
*Please provide machining pattern with order for type BC carriers. **Maximum carrier width for type RR is 10".

28G Carrier Types & Dimensions

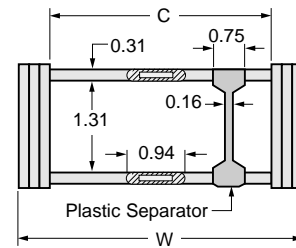
ALL DIMENSIONS IN INCHES



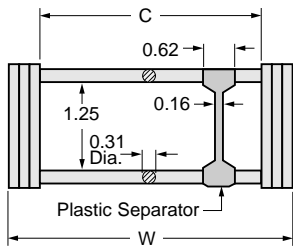
TYPE BC
Aluminum bars standard. Nylon also available. Consult factory.



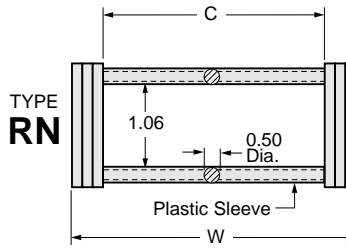
TYPE RR
①



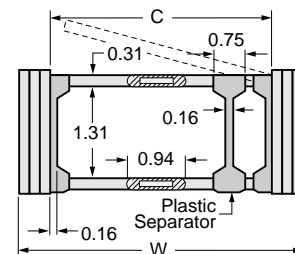
WITHOUT SEPARATOR
TYPE
AC
WITH SEPARATOR(S)
TYPE
A1②



WITHOUT SEPARATOR
TYPE
SR
WITH SEPARATOR(S)
TYPE
R1②



TYPE RN



WITHOUT SEPARATOR
TYPE
TB
WITH SEPARATOR(S)
TYPE
T1②

Dimensions in Inches

CARRIER WIDTH* C	POWERTRAK WIDTH W
4.00	5.34
6.00	7.34
8.00	9.34
10.00	11.34
12.00	13.34
Formula	C + 1.34

*Special widths available. Consult factory.

NOTES:

- Carrier type RR limited to "C" dimension no greater than 10.00".
- Numeral "1" refers to the number of vertical separators desired and must be included in the model number when ordering. For example: R1 (as above), R2 (2 separators), R3 (3 separators), etc.

NOTE:

Separators are recommended for multiple cable/hose packages to create smaller groups resulting in longer cable/hose life. Separators are adjustable and can be positioned anywhere along the carrier's width.

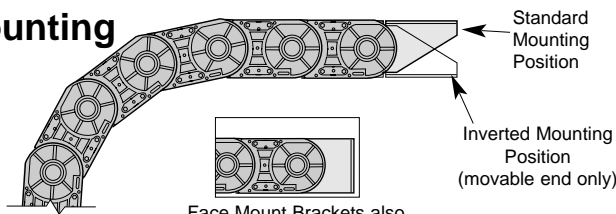
Mounting Brackets

Dimensions in Inches

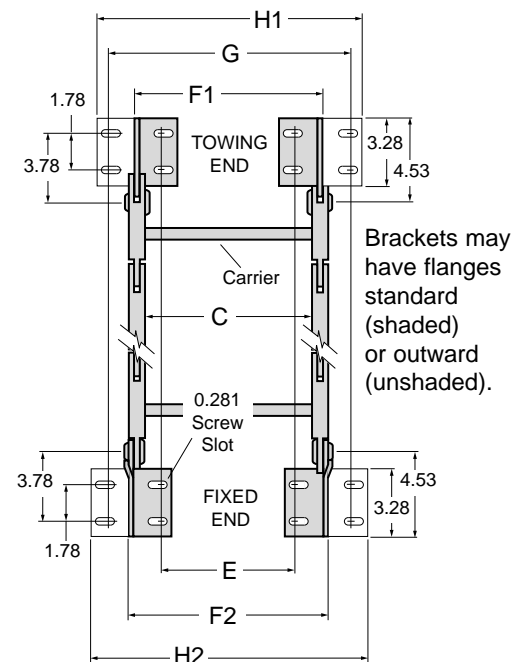
CARRIER WIDTH C	FEET TURNED IN		FEET TURNED OUT		
	MTG. LOCATION E ± .06	OVER BRKTS F1 F2	MTG. LOCATION G ± .06	OVER BRKTS H1 H2	
4.00	3.18	4.74 5.13	6.16	7.54 7.14	
6.00	5.18	6.74 7.13	8.16	9.54 9.14	
8.00	7.18	8.74 9.13	10.16	11.54 11.14	
10.00	9.18	10.74 11.13	12.16	13.54 13.14	
12.00	11.18	12.74 13.13	14.16	15.54 15.14	
Formula	C - 0.82	C + 0.74 C + 1.13	C + 2.16	C + 3.54 C + 3.14	

When ordering PowerTrak mounting brackets, specify end and flange arrangement (ie: Brackets both ends, flanges inward).

Foot Mounting Options



Face Mount Brackets also Available. Consult factory.



Brackets may have flanges standard (shaded) or outward (unshaded).