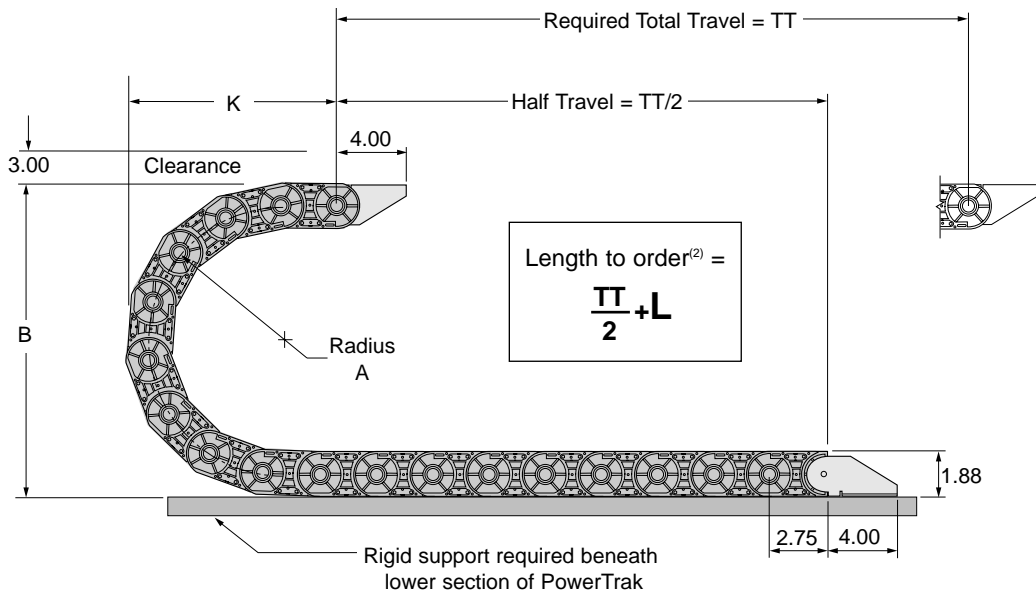


25G

GLEASON PowerTrak[®] GRP

- HEAVY DUTY DESIGN AND CONSTRUCTION
- SIDE CHAIN IS GLASS FIBER REINFORCED NYLON
- VARIETY OF CARRIER STYLES & SIZES
- RADII "A" AVAILABLE 2.78", 4.95", 7.70" & 11.64"
- TOTAL TRAVEL = 14.0 FT. (1)
- GUIDE TRAYS OR CARRIAGES NOT AVAILABLE



25G Dimensions

Inches unless otherwise indicated

RADIUS A	HEIGHT B	MINIMUM K	CURVE L ⁽³⁾
2.78	7.64	8.35	1.5 ft.
4.95	11.77	10.11	2.0 ft.
7.70	17.28	11.54	2.5 ft.
11.64	25.16	15.29	3.5 ft.

NOTES:

- (1) Total Travel is nominal, based on standard travel with cable/hose package weight of 0.5 lb/ft., and may vary with environment.
- (2) For standard travel, i.e. two-way payout as pictured above.
- (3) L = Minimum length in FEET to form PowerTrak curve.
- (4) Indicates width in inches.

WEIGHT FORMULA, side chains and carriers only: $0.83 + (C \times 0.12) = \text{weight (lbs/ft.)}$. C = carrier width in inches.
 For total weight: Trak weight (lbs/ft.) + cable/hose weight (lbs/ft.) x Trak length (ft.)

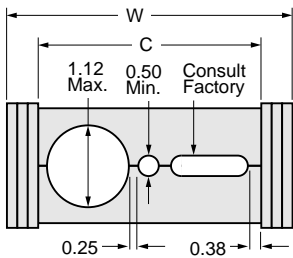
Model Number Explanation

POWERTRAK TYPE	CARRIER TYPE	RADIUS	CARRIER WIDTH ⁽⁴⁾
PT 25G	BC*	5.4	10
	BC*, T1, AC, SR, R1, RN, A1, TB, RR**	2.78", 4.95", 7.70", 11.64"	4, 6, 8, 10, 12

*Please provide machining pattern with order for type BC carriers. **Maximum carrier width for type RR is 10".

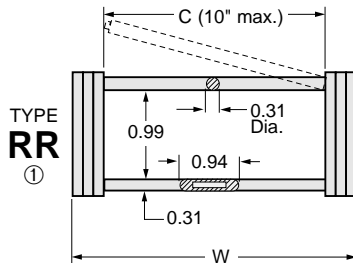
25G Carrier Types & Dimensions

ALL DIMENSIONS IN INCHES



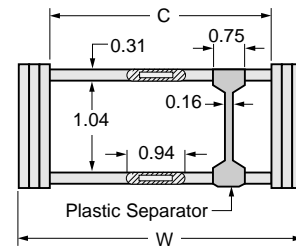
TYPE BC

Aluminum bars standard. Nylon also available. Consult factory.



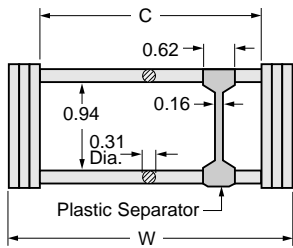
TYPE RR

①



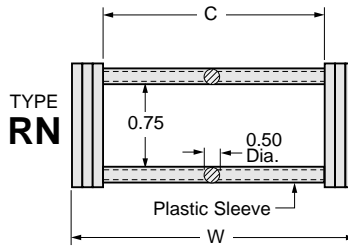
WITHOUT SEPARATOR TYPE AC

WITH SEPARATOR(S) TYPE A1^②

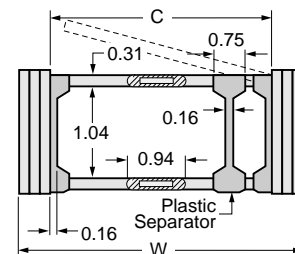


WITHOUT SEPARATOR TYPE SR

WITH SEPARATOR(S) TYPE R1^②



TYPE RN



WITHOUT SEPARATOR TYPE TB

WITH SEPARATOR(S) TYPE T1^②

Dimensions in Inches

CARRIER WIDTH* C	POWERTRAK WIDTH W
4.00	5.25
6.00	7.25
8.00	9.25
10.00	11.25
12.00	13.25
Formula	C + 1.25

*Special widths available. Consult factory.

NOTES:

- ① Carrier type RR limited to "C" dimension no greater than 10.00".
- ② Numeral "1" refers to the number of vertical separators desired and must be included in the model number when ordering. For example: R1 (as above), R2 (2 separators), R3 (3 separators), etc.

NOTE:

Separators are recommended for multiple cable/hose packages to create smaller groups resulting in longer cable/hose life. Separators are adjustable and can be positioned anywhere along the carrier's width.

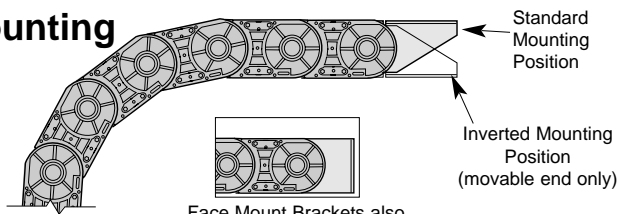
Mounting Brackets

Dimensions in Inches

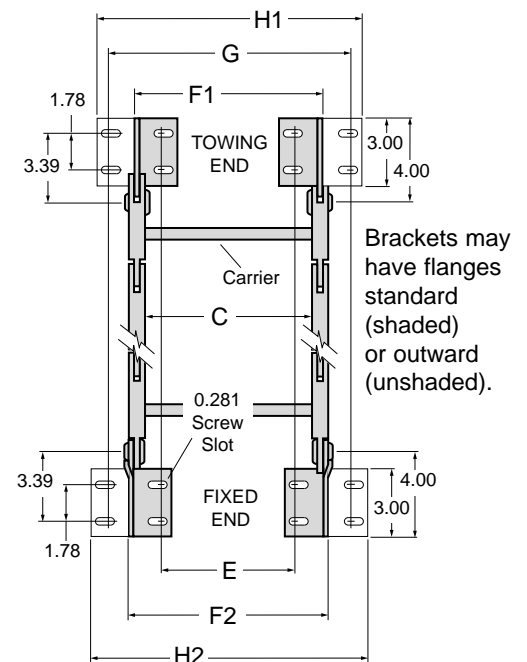
CARRIER WIDTH C	FEET TURNED IN		FEET TURNED OUT		
	MTG. LOCATION E ± .06	OVER BRKTS F1 F2	MTG. LOCATION G ± .06	OVER BRKTS H1 H2	
4.00	3.18	4.68 5.06	6.07	7.07	7.09
6.00	5.18	6.68 7.06	8.07	9.07	9.09
8.00	7.18	8.68 9.06	10.07	11.07	11.09
10.00	9.18	10.68 11.06	12.07	13.07	13.09
12.00	11.18	12.68 13.06	14.07	15.07	15.09
Formula	C - 0.82	C + 0.68 C + 1.06	C + 2.07	C + 3.07	C + 3.09

When ordering PowerTrak mounting brackets, specify end and flange arrangement (ie: Brackets both ends, flanges inward).

Foot Mounting Options



Face Mount Brackets also Available. Consult factory.



Brackets may have flanges standard (shaded) or outward (unshaded).