

**SIDE CHAINS -**  
Two per trak

**MOUNTING BRACKETS -** Two pair per trak

**CARRIERS -**  
Many styles available

**HINGE PINS**

**CARRIER BOLTS**

**ANTI-FRICTION DISCS**

**LINKS**

**ONE-PIECE PUSH-ON FASTENERS**  
*Standard Duty Only*

## Standard Duty

**FOR RUGGED SERVICE  
MODELS PT25E - PT48E**

**High Strength Steel Links**  
Manufactured from high-strength, low-alloy steel, the highest material standard in the industry. Stainless steel links available for special needs.

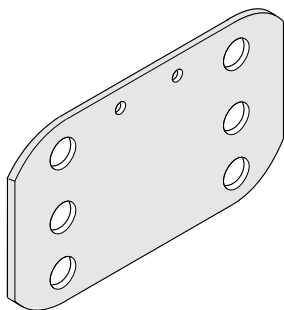
**Anti-friction Discs**  
Unique discs placed between the links to reduce friction while at the same time permitting tighter tolerances. PowerTrak runs quietly and efficiently because the nylon used to make the discs is a natural bearing material. Extreme temperature discs are available for special requirements.

**Fasteners**  
Rugged hinge pins secured by ONE-PIECE, PUSH-ON FASTENERS. These unique fasteners cannot be over tightened.

**Flat Link Design**  
PowerTrak employs a 2:2 flat link design for maximum strength and durability. Two inner links are "sandwiched" between two outer links with Anti-friction Discs as bearing material.

## Heavy Duty

**FOR HEAVIER LOADS AND LARGER CABLES/HOSES  
MODELS PT55E - PT100E**



### TYPICAL APPLICATIONS

- Machine Tools
- Robotics
- Automated Stackers
- Rail Mounted Equipment
- Gas Cutting Torches
- Extending Arms
- Gantry Cranes
- Loaders
- Crane Service
- Shuttle Cars

## E-TYPE

### STANDARD FEATURES

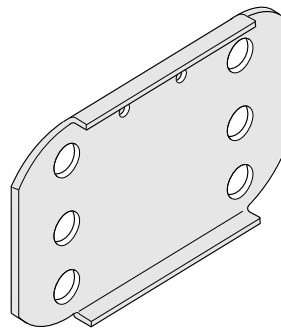
- 2:2 Flat Link Design
- Retaining Ring Fasteners
- High Strength, Low Alloy Steel Construction
- Anti Friction Discs
- Multiple Carrier Types
- Full Range of Sizes
- Multiple Radii
- Variable Widths

### OPTIONAL FEATURES

- Bolted Construction (*EB-Type*)
- Available for Extended Travel
- Available for High Speeds
- Roller Supports for Extended Travel Lengths
- Sliding Mounting Brackets

## Mill Duty

**OPTIONAL CONSTRUCTION FOR ALL HEAVY DUTY  
MODELS PT55EF - PT100EF**



### TYPICAL APPLICATIONS

- Heavy Machines
- Automated Stackers
- Equipment Moving on Rails
- Gas Cutting Torches
- Extending Arms
- Gantry Cranes
- Harsh Environments
- Off-Shore Rigs

## EF-TYPE

### STANDARD FEATURES

- 2:2 FLANGED Link Design
- Bolted Construction
- High Strength, Low Alloy Steel Construction
- Anti Friction Discs
- Multiple Carrier Types
- Full Range of Sizes
- Multiple Radii
- Variable Widths

### OPTIONAL FEATURES

- Retaining Ring Fasteners (*EFP-Type*)
- High-Temp Anti-Friction Discs
- Sliding Mounting Brackets (for high pressure hoses, etc.)
- Roller Supports for Extended Travel Lengths