

GLEASON Beam·Master™ For FLAT Cable

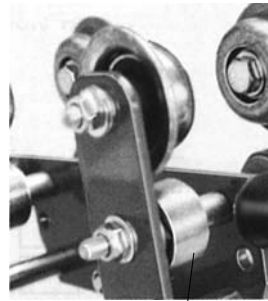
SERIES I110-F

- FLAT CLAMP DESIGN
- FLANGED 1.60" DIA. STEEL WHEELS STANDARD
- ANTI-LIFT ROLLERS STANDARD
- SEALED BALL BEARINGS STANDARD

- MAX SADDLE DIAMETER = 4.94"
- MAX TROLLEY LOAD = 150 lbs.
- TRAVEL SPEEDS TO 350 fpm
- ACCELERATION—Consult us if over 2.0 ft/sec².
- TRAVEL LENGTHS UNLIMITED

Standard Trolley Design

- Flanged 1.61" dia. steel wheels
- Anti-lift rollers
- Sealed bearings are pre-lubricated for life
- Tow trolley included as standard
- Zinc plated hardware
- Orange baked polyester powder finish
- Heavy duty bumpers
- Typical mounting on S3 or larger beams – contact us for special situations
- Cable clamp allows cable pkg height to vary up to 0.12"



ANTI-LIFT ROLLERS INCLUDED

S

STEEL FLANGED WHEELS



ALL MAIN BEARINGS ARE SEALED AND USE PRECISION BALL BEARINGS

Model Number Explained

For STANDARD DESIGN, specific model numbers are on the following page.

TYPE	CLAMP STYLE	SADDLE DIAMETER	WINDOW HEIGHT	WINDOW WIDTH	Std. Hdw. HARDWARE MATERIAL	Std. Wheels** WHEEL MATERIAL	Your Beam
#I110	F	03	- 15	02	- Z - ZINC PLATED	S STEEL	<input type="text"/> <input type="text"/> <input type="text"/> x <input type="text"/> <input type="text"/> <input type="text"/> . <input type="text"/>
Chosen by computer				Option you select	Hdwr Option	Wheel Options	Minimum Beam Height = 3"
* Example above is for INTERMEDIATE TROLLEY (I) Use same option changes (at right) for other components as required.					S STAINLESS	B BRONZE N NYLON	**Not applicable to end clamps

Option Design Features

CODE	OPTION
N	FLANGED NYLON MAIN WHEELS WITH STEEL ANTI-LIFT ROLLERS
B	BRONZE MAIN WHEELS WITH BRONZE ANTI-LIFT WHEELS
S	STAINLESS STEEL HARDWARE
<input type="checkbox"/>	OTHER FINISHES AVAILABLE – PLEASE CONTACT US
<input type="checkbox"/>	PRE-ASSEMBLY ON SHIPPING FRAME AVAILABLE



B
BRONZE FLANGED WHEELS
BRONZE ANTI-LIFT ROLLERS



N
NYLON FLANGED WHEELS
STEEL ANTI-LIFT ROLLERS

Accessories

See detail pages at back of catalog

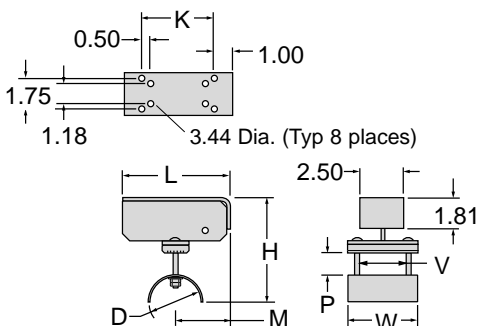
- CABLE CLAMPS
- FLAT CABLE
- TOW CHAINS
- TERMINAL BOX(ES)
- TY-RAPS
- CABLE GLANDS FOR SINGLE CABLES OR GROUPS
- TERMINAL BLOCKS

Series I110-F Components & Dimensions

For FLAT Cable or Hose

All dimensions in inches unless otherwise specified.

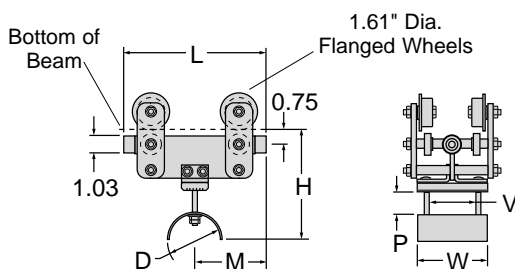
End Clamp *One Required*



Model Number	Saddle Radius R	Saddle Dia. D	Window Height P	Window Width V	Overall Length L	Overall Width W	Below Beam H	Saddle Locator M	Bolts K
<i>w/ Std Hardware</i>									
I110-F03-1502E-Z	1.56	3.12	1.50	2.62	6.16	3.94	5.75	3.16	4.16
I110-F03-1505E-Z	1.56	3.12	1.50	5.00	6.16	6.31	5.75	3.16	4.16
I110-F03-2302E-Z	1.56	3.12	2.31	2.62	6.94	3.94	6.56	3.94	4.94
I110-F03-2305E-Z	1.56	3.12	2.31	5.00	6.94	6.31	6.56	3.94	4.94
I110-F04-0602E-Z	2.47	4.94	0.62	2.62	6.16	3.94	5.78	3.16	4.16
I110-F04-0605E-Z	2.47	4.94	0.62	5.00	6.16	6.31	5.78	3.16	4.16
I110-F04-1302E-Z	2.47	4.94	1.38	2.62	6.94	3.94	6.53	3.94	4.94
I110-F04-1305E-Z	2.47	4.94	1.38	5.00	6.94	6.31	6.53	3.94	4.94
I110-F04-2302E-Z	2.47	4.94	2.38	2.62	9.19	3.94	7.53	4.94	7.19
I110-F04-2305E-Z	2.47	4.94	2.38	5.00	9.19	6.31	7.53	4.94	7.19

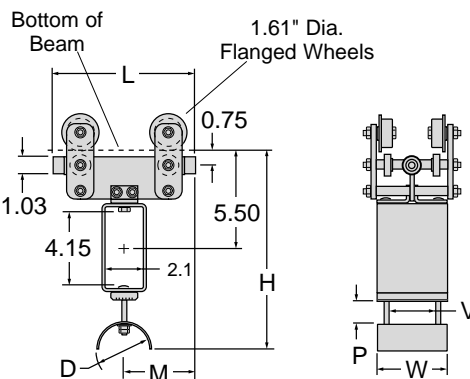
Fits all beam sizes.

Intermediate Trolley *Quantity as Required*



Model Number	Saddle Radius R	Saddle Dia. D	Window Height P	Window Width V	Overall Length L	Overall Width W	Below Beam H	Saddle Locator M
<i>w/ Std Hardware & Wheels</i>								
I110-F03-1502I-Z-S-□	1.56	3.12	1.50	2.62	6.31	3.94	6.50	3.16
I110-F03-1505I-Z-S-□	1.56	3.12	1.50	5.00	6.31	6.31	6.50	3.16
I110-F03-2302I-Z-S-□	1.56	3.12	2.31	2.62	7.88	3.94	7.31	3.94
I110-F03-2305I-Z-S-□	1.56	3.12	2.31	5.00	7.88	6.31	7.31	3.94
I110-F04-0602I-Z-S-□	2.47	4.94	0.62	2.62	6.31	3.94	6.53	3.16
I110-F04-0605I-Z-S-□	2.47	4.94	0.62	5.00	6.31	6.31	6.53	3.16
I110-F04-1302I-Z-S-□	2.47	4.94	1.38	2.62	7.88	3.94	7.31	3.94
I110-F04-1305I-Z-S-□	2.47	4.94	1.38	5.00	7.88	6.31	7.31	3.94
I110-F04-2302I-Z-S-□	2.47	4.94	2.38	2.62	9.88	3.94	8.31	4.94
I110-F04-2305I-Z-S-□	2.47	4.94	2.38	5.00	9.88	6.31	8.31	4.94

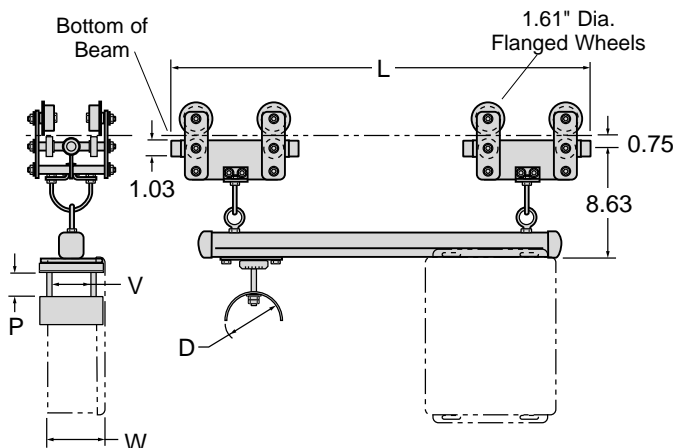
Your beam size must be added to complete model number. See previous pages.



Tow Trolley *One Required*

Model Number	Saddle Radius R	Saddle Dia. D	Window Height P	Window Width V	Overall Length L	Overall Width W	Below Beam H	Saddle Locator M
<i>w/ Std Hardware & Wheels</i>								
I110-F03-1502T-Z-S-□	1.56	3.12	1.50	2.62	6.31	3.94	11.31	3.16
I110-F03-1505T-Z-S-□	1.56	3.12	1.50	5.00	6.31	6.31	11.31	3.16
I110-F03-2302T-Z-S-□	1.56	3.12	2.31	2.62	7.88	3.94	12.12	3.94
I110-F03-2305T-Z-S-□	1.56	3.12	2.31	5.00	7.88	6.31	12.12	3.94
I110-F04-0602T-Z-S-□	2.47	4.94	0.62	2.62	6.31	3.94	11.34	3.16
I110-F04-0605T-Z-S-□	2.47	4.94	0.62	5.00	6.31	6.31	11.34	3.16
I110-F04-1302T-Z-S-□	2.47	4.94	1.38	2.62	7.88	3.94	12.10	3.94
I110-F04-1305T-Z-S-□	2.47	4.94	1.38	5.00	7.88	6.31	12.10	3.94
I110-F04-2302T-Z-S-□	2.47	4.94	2.38	2.62	9.88	3.94	13.10	4.94
I110-F04-2305T-Z-S-□	2.47	4.94	2.38	5.00	9.88	6.31	13.10	4.94

Your beam size must be added to complete model number. See previous pages.



Control Unit Trolley *Optional Item* *Replaces Tow Trolley*

Model Number	Saddle Radius R	Saddle Dia. D	Window Height P	Window Width V	Overall Length L	Overall Width W
<i>w/ Std Hardware & Wheels</i>						
I110-F03-1502U-Z-S-□	1.56	3.12	1.50	2.62	33.50	6.00
I110-F03-1505U-Z-S-□	1.56	3.12	1.50	5.00	33.50	6.31
I110-F03-2302U-Z-S-□	1.56	3.12	2.31	2.62	33.50	6.00
I110-F03-2305U-Z-S-□	1.56	3.12	2.31	5.00	33.50	6.31
I110-F04-0602U-Z-S-□	2.47	4.94	0.62	2.62	33.50	6.00
I110-F04-0605U-Z-S-□	2.47	4.94	0.62	5.00	33.50	6.31
I110-F04-1302U-Z-S-□	2.47	4.94	1.38	2.62	33.50	6.00
I110-F04-1305U-Z-S-□	2.47	4.94	1.38	5.00	33.50	6.31
I110-F04-2302U-Z-S-□	2.47	4.94	2.38	2.62	33.50	6.00
I110-F04-2305U-Z-S-□	2.47	4.94	2.38	5.00	33.50	6.31

Your beam size must be added to complete model number. See previous pages.