

# GLEASON TRACK • MASTER™ SERIES C50-M

## For ROUND or FLAT Cable

- MIXED CLAMP DESIGN
- 1.25" DIA. PRECISION BALL BEARING STEEL WHEELS STANDARD

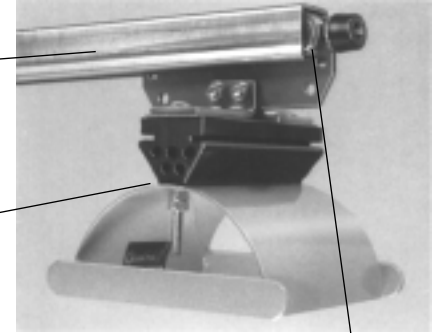
- MAX SADDLE DIAMETER = 6.31"
- MAX TROLLEY LOAD = 80 lbs.
- TRAVEL SPEEDS UP TO 350 fpm
- ACCELERATION—Consult us if over 2.0 ft/sec<sup>2</sup>
- MAX TRAVEL = 250 ft.—Consult us if greater

### Standard Trolley Design

- 1.25" Dia. precision ball bearing wheels
- Bearings are pre-lubricated for life
- Tow trolley included as standard
- Hardware is zinc plated
- Orange baked polyester powder finish
- Includes heavy duty bumpers
- Cable Clamp allows cable package height to vary up to 0.25"

GALVANIZED C-RAIL

MIXED CABLE CLAMP



**S**

STEEL WHEELS  
Bronze available

### Model Number Explained

For STANDARD DESIGN, specific model numbers are on the following page.

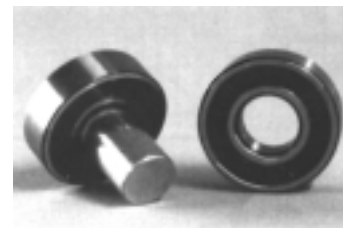
TYPE	CLAMP STYLE	SADDLE DIAMETER	WIDOW HEIGHT	WINDOW WIDTH	ITEM	Standard Hardware HARDWARE MATERIAL	Standard Wheels** WHEEL MATERIAL
#C50	M	06	06	01	I -	Z -	S
Chosen by computer						ZINC PLATED	STEEL
Options you select						Hardware Option	Wheel Option
						<b>S</b> STAINLESS	<b>B</b> BRONZE

\* Example above is for INTERMEDIATE TROLLEY (I) Use same option changes (at right) for other components as required.

\*\*Not applicable to end clamps

### Option Design Features

CODE	OPTION
<input checked="" type="checkbox"/> <b>B</b>	BRONZE ANTI-SPARK WHEELS w/ BRONZE BEARINGS (De-rate maximum trolley load by 50% for bronze wheels)
<input checked="" type="checkbox"/> <b>S</b>	STAINLESS STEEL HARDWARE
<input type="checkbox"/>	OTHER FINISHES AVAILABLE – PLEASE CONTACT US
<input type="checkbox"/>	FACTORY PRE-ASSEMBLY ON SHIPPING FRAME



STANDARD STEEL WHEELS

Bronze Anti-Spark Wheels  
Optional

### Track Hardware See detail pages at back of catalog

- RAIL TRACK SECTIONS
- RAIL COUPLER ASSEMBLIES
- VINYL END CAPS
- RAIL HANGER ASSEMBLIES
- RAIL ENDSTOP ASSEMBLIES

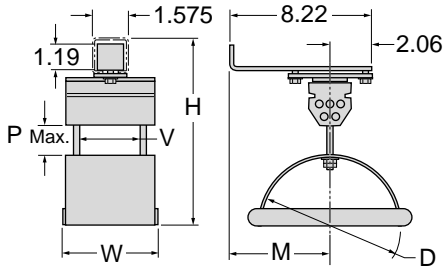
### Accessories See detail pages at back of catalog

- TOW CHAINS
- HOSE - GENERAL PURPOSE or HYDRAULIC
- JUNCTION BOX(ES)
- CABLE - ROUND OR FLAT
- TERMINAL BLOCKS
- TY-WRAPPS
- CABLE CLAMPS—MIXED DESIGN
- CABLE GLANDS FOR SINGLE CABLES OR GROUPS

# Series C50-M Components & Dimensions

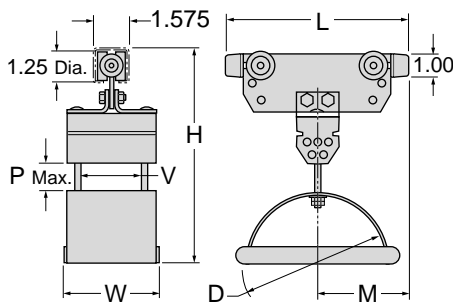
MIXED CLAMP DESIGN for FLAT OR ROUND CABLE OR HOSE

All dimensions in inches unless otherwise specified.



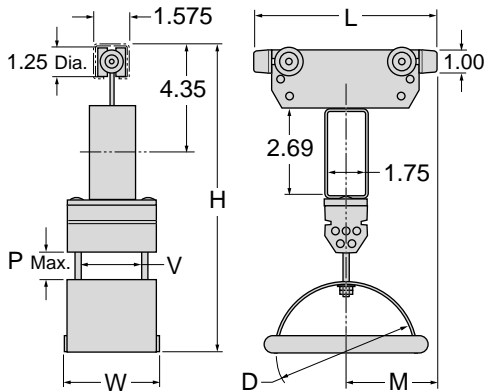
## End Clamp *One Required*

Model Number <small>w/ Standard Hardware</small>	Saddle Radius <b>R</b>	Saddle Dia. <b>D</b>	Window Height <b>P</b>	Window Width <b>V</b>	Overall Width <b>W</b>	Top of Track <b>H</b>	Saddle Locator <b>M</b>
C50-M06-0601E-Z	3.15	6.31	0.62	1.88	3.44	7.81	6.16
C50-M06-0602E-Z	3.15	6.31	0.62	2.62	4.19	7.81	6.16
C50-M06-0605E-Z	3.15	6.31	0.62	5.00	6.56	7.81	6.16
C50-M06-0606E-Z	3.15	6.31	0.62	6.56	8.12	7.81	6.16



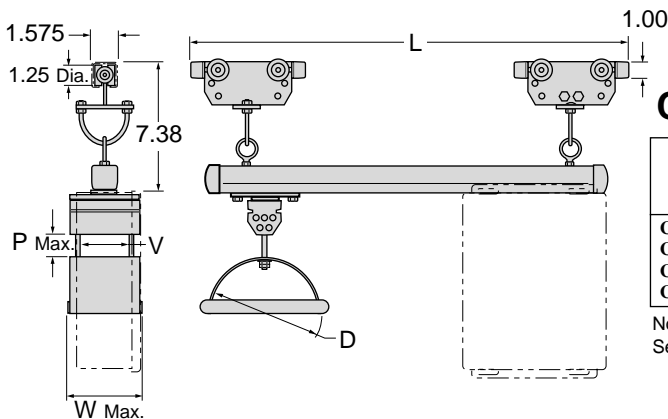
## Intermediate Trolley *Quantity as Required*

Model Number <small>w/ Std Hardware &amp; Wheels</small>	Saddle Radius <b>R</b>	Saddle Dia. <b>D</b>	Window Height <b>P</b>	Window Width <b>V</b>	Overall Length <b>L</b>	Overall Width <b>W</b>	Top of Track <b>H</b>	Saddle Locator <b>M</b>
C50-M06-0601I-Z-S	3.15	6.31	0.62	1.88	7.88	3.44	8.89	3.94
C50-M06-0602I-Z-S	3.15	6.31	0.62	2.62	7.88	4.19	8.89	3.94
C50-M06-0605I-Z-S	3.15	6.31	0.62	5.00	7.88	6.56	8.89	3.94
C50-M06-0606I-Z-S	3.15	6.31	0.62	6.56	7.88	8.12	8.89	3.94



## Tow Trolley *Standard...One Required*

Model Number <small>w/ Std Hardware &amp; Wheels</small>	Saddle Radius <b>R</b>	Saddle Dia. <b>D</b>	Window Height <b>P</b>	Window Width <b>V</b>	Overall Length <b>L</b>	Overall Width <b>W</b>	Top of Track <b>H</b>	Saddle Locator <b>M</b>
C50-M06-0601T-Z-S	3.15	6.31	0.62	1.88	7.88	3.44	11.92	3.94
C50-M06-0602T-Z-S	3.15	6.31	0.62	2.62	7.88	4.19	11.92	3.94
C50-M06-0605T-Z-S	3.15	6.31	0.62	5.00	7.88	6.56	11.92	3.94
C50-M06-0606T-Z-S	3.15	6.31	0.62	6.56	7.88	8.12	11.92	3.94



## Control Unit Trolley *Optional...Replaces Tow Trolley*

Model Number <small>w/ Standard Hardware</small>	Saddle Radius <b>R</b>	Saddle Dia. <b>D</b>	Window Height <b>P</b>	Window Width <b>V</b>	Overall Length <b>L</b>	Overall Width <b>W</b>
C50-M06-0601U-Z-S	3.15	6.31	0.62	1.88	33.50	6.00
C50-M06-0602U-Z-S	3.15	6.31	0.62	2.62	33.50	6.00
C50-M06-0605U-Z-S	3.15	6.31	0.62	5.00	33.50	6.56
C50-M06-0606U-Z-S	3.15	6.31	0.62	6.56	33.50	8.12

Note: Rail Mounted Junction Boxes are available.  
See "Accessories" section at back of catalog.