

# GLEASON TRACK • MASTER™

# SERIES C40-F

## For FLAT Cable or Hose

- FLAT CLAMP DESIGN
- 0.87" DIA. PRECISION BALL BEARING STEEL WHEELS STANDARD

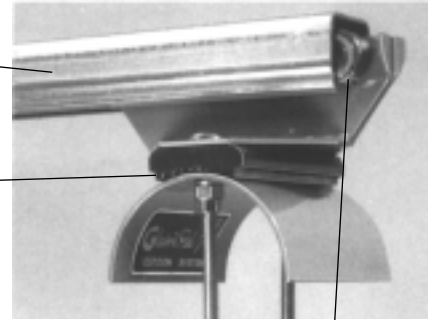
- MAX SADDLE DIAMETER = 3.12"
- MAX TROLLEY LOAD = 50 lbs.
- TRAVEL SPEEDS UP TO 350 fpm.
- ACCELERATION—Consult us if over 2.0 ft/sec<sup>2</sup>
- MAX TRAVEL = 100 ft.—Consult us if greater

### Standard Trolley Design

- 0.87" Dia. precision ball bearing wheels
- Bearings are pre-lubricated for life
- Tow trolley included as standard
- Hardware is zinc plated
- Orange baked polyester powder finish
- Cable Clamp allows cable package height to vary up to 0.12"

GALVANIZED C-RAIL  
STAINLESS STEEL TRACK AVAILABLE

FLAT CABLE CLAMP



**S**

STEEL WHEELS

### Model Number Explained

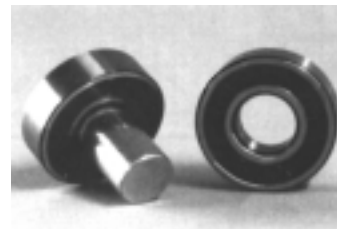
For STANDARD DESIGN, specific model numbers are on the following page.

Standard Intermediate Trolley *						Standard Hardware	Standard Wheels**
TYPE	CLAMP STYLE	SADDLE DIAMETER	WINDOW HEIGHT	WINDOW WIDTH	ITEM	HARDWARE MATERIAL	WHEEL MATERIAL
#C40	F	02	05	02	I	Z	S
Chosen by computer						ZINC PLATED	STEEL
Options you select						Hardware Option	<b>S</b>
						<b>S</b> STAINLESS	**Not applicable to end clamps

\* Example above is for INTERMEDIATE TROLLEY (I) Use same option changes (at right) for other components as required.

### Option Design Features

CODE	OPTION
<input checked="" type="checkbox"/>	STAINLESS STEEL HARDWARE
<input type="checkbox"/>	OTHER FINISHES AVAILABLE – PLEASE CONTACT US
<input type="checkbox"/>	FACTORY PRE-ASSEMBLY ON SHIPPING FRAME



STANDARD STEEL WHEELS

### Track Hardware

See detail pages at back of catalog

- RAIL TRACK SECTIONS
- RAIL COUPLER ASSEMBLIES
- VINYL END CAPS
- RAIL HANGER ASSEMBLIES
- RAIL ENDSTOP ASSEMBLIES

### Accessories

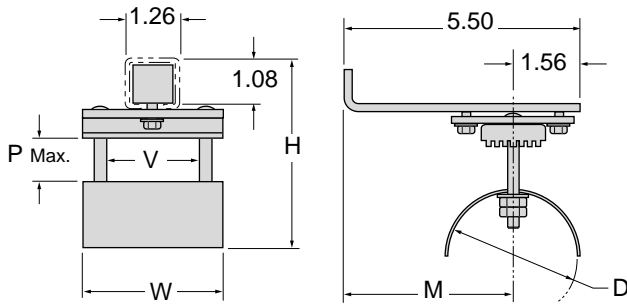
See detail pages at back of catalog

- HOSE - FLAT DESIGN
- JUNCTION BOX(ES)
- CABLE - ROUND OR FLAT
- TERMINAL BLOCKS
- TY-WRAPS
- HOSE - GENERAL PURPOSE or HYDRAULIC
- CABLE GLANDS FOR SINGLE CABLES OR GROUPS

# Series C40-F Components & Dimensions

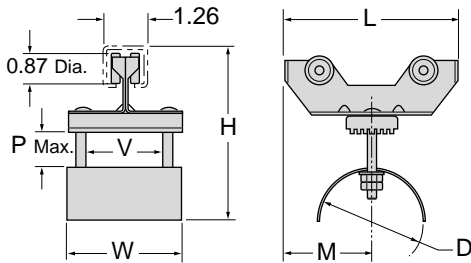
FLAT CLAMP DESIGN for FLAT CABLE

All dimensions in inches unless otherwise specified.



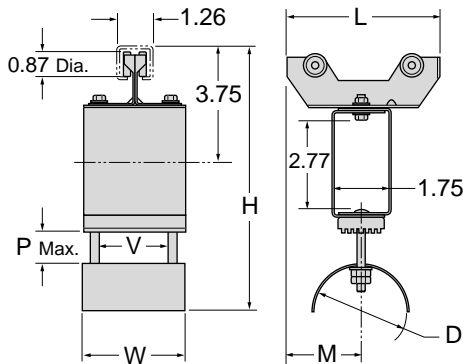
## End Clamp *One Required*

Model Number	Saddle Radius R	Saddle Dia. D	Window Height P	Window Width V	Overall Width W	Top of Track H	Saddle Locator M
<i>w/ Standard Hardware</i>							
C40-F02-0502E-Z	1.00	2.00	1.50	2.12	3.25	4.37	3.94
C40-F02-1502E-Z	1.00	2.00	1.50	2.12	3.25	4.37	3.94
C40-F03-0902E-Z	1.56	3.12	0.94	2.12	3.25	4.37	3.94



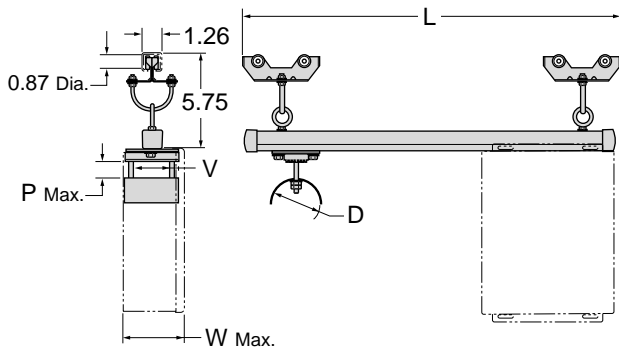
## Intermediate Trolley *Quantity as Required*

Model Number	Saddle Radius R	Saddle Dia. D	Window Height P	Window Width V	Overall Length L	Overall Width W	Top of Track H	Saddle Locator M
<i>w/ Std Hardware &amp; Wheels</i>								
C40-F02-0502I-Z-S	1.00	2.00	0.56	2.12	3.12	3.25	4.03	1.56
C40-F02-1502I-Z-S	1.00	2.00	1.50	2.12	5.00	3.25	5.03	2.50
C40-F03-0902I-Z-S	1.56	3.12	0.94	2.12	5.00	3.25	5.03	2.50



## Tow Trolley *Standard...One Required*

Model Number	Saddle Radius R	Saddle Dia. D	Window Height P	Window Width V	Overall Length L	Overall Width W	Top of Track H	Saddle Locator M
<i>w/ Std Hardware &amp; Wheels</i>								
C40-F02-0502T-Z-S	1.00	2.00	1.50	2.12	5.00	3.25	8.63	2.50
C40-F02-1502T-Z-S	1.00	2.00	1.50	2.12	5.00	3.25	8.63	2.50
C40-F03-0902T-Z-S	1.56	3.12	0.94	2.12	5.00	3.25	8.63	2.50



## Control Unit Trolley *Optional...Replaces Tow Trolley*

Model Number	Saddle Radius R	Saddle Dia. D	Window Height P	Window Width V	Overall Length L	Overall Width W
<i>w/ Standard Hardware</i>						
C40-F02-0502U-Z-S	1.00	2.00	1.50	2.12	20.50	6.00
C40-F02-1502U-Z-S	1.00	2.00	1.50	2.12	20.50	6.00
C40-F03-0902U-Z-S	1.56	3.12	0.94	2.12	20.50	6.00

Note: Rail Mounted Junction Boxes are available.  
See "Accessories" section at back of catalog.