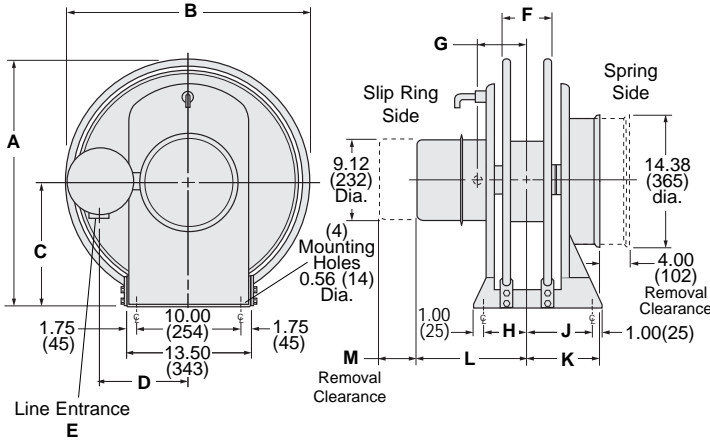


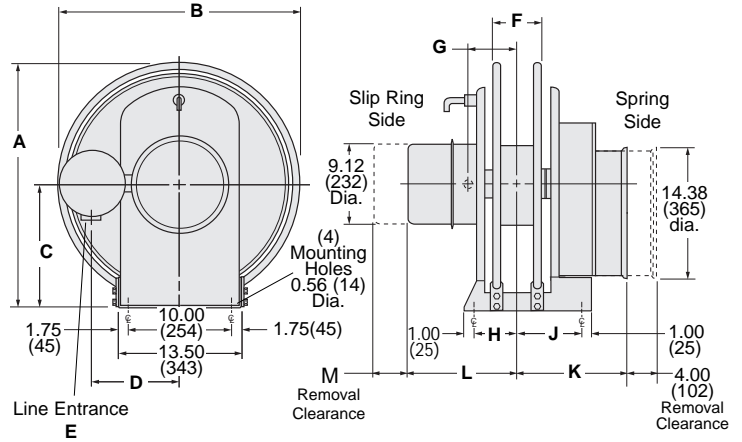
MMD Reel Dimensions

All dimensions in inches (mm). Weights in pounds (Kg.)

MMD Direct Drive Reels



MMD Gear Drive Reels



SERIES	A	B	C	D	E	F	G	H	J	SPRING MOTORS (Dimensions and Approximate Weights of Reel with Spring shown)							
										1001		1002		1003		1004	
										K	WGT.	K	WGT.	K	WGT.	K	WGT.
MMD 21 DIRECT DRIVE 21" dia. spool	24.34 (618)	23.68 (602)	12.50 (318)	9.75 (248)	1.50 NPT	6.12 (155)	5.75 (146)	5.25 (133)	5.25 (133)	8.50 (216)	195 (89)	11.88 (302)	255 (116)	15.25 (387)	315 (143)	18.62 (473)	375 (169)
MMD 21 GEAR DRIVE 21" dia. spool	24.34 (618)	23.68 (602)	12.50 (318)	9.75 (248)	1.50 NPT	6.12 (155)	5.75 (146)	5.25 (133)	5.25 (133)	13.50 (343)	220 (100)	16.88 (429)	280 (127)	20.25 (514)	340 (154)	23.62 (600)	400 (181)
MMD 24 DIRECT DRIVE 24" dia. spool	27.34 (694)	26.68 (678)	14.00 (356)	9.75 (248)	1.50 NPT	6.12 (155)	5.75 (146)	5.25 (133)	8.75 (222)	8.50 (216)	205 (93)	11.88 (302)	265 (120)	15.25 (387)	325 (147)	18.62 (473)	385 (175)
MMD 24 GEAR DRIVE 24" dia. spool	27.34 (694)	26.68 (678)	14.00 (356)	9.75 (248)	1.50 NPT	6.12 (155)	5.75 (146)	5.25 (133)	8.75 (222)	13.50 (343)	230 (104)	16.88 (429)	290 (132)	20.25 (514)	350 (159)	23.62 (600)	410 (186)
MMD 28 DIRECT DRIVE 28" dia. spool	31.34 (796)	30.68 (779)	16.00 (406)	11.12 (282)	2.00 NPT	8.12 (206)	6.75 (172)	6.25 (159)	9.75 (248)	9.50 (241)	220 (100)	12.88 (327)	280 (127)	16.25 (413)	340 (154)	19.62 (498)	400 (181)
MMD 28 GEAR DRIVE 28" dia. spool	31.34 (796)	30.68 (779)	16.00 (406)	11.12 (282)	2.00 NPT	8.12 (206)	6.75 (172)	6.25 (159)	9.75 (248)	14.50 (368)	250 (113)	17.88 (454)	310 (141)	21.25 (540)	370 (168)	24.62 (625)	430 (195)
MMD 32 DIRECT DRIVE 32" dia. spool	35.34 (898)	34.68 (881)	18.00 (457)	9.75 (248)	2.00 NPT	8.12 (206)	6.75 (172)	6.25 (159)	9.75 (248)	9.50 (241)	240 (108)	12.88 (327)	300 (135)	16.25 (413)	360 (162)	19.62 (498)	420 (189)
MMD 32 GEAR DRIVE 32" dia. spool	35.34 (898)	34.68 (881)	18.00 (457)	9.75 (248)	2.00 NPT	8.12 (206)	6.75 (172)	6.25 (159)	9.75 (248)	15.31 (389)	270 (122)	18.69 (475)	330 (149)	22.06 (560)	390 (176)	25.43 (646)	450 (203)

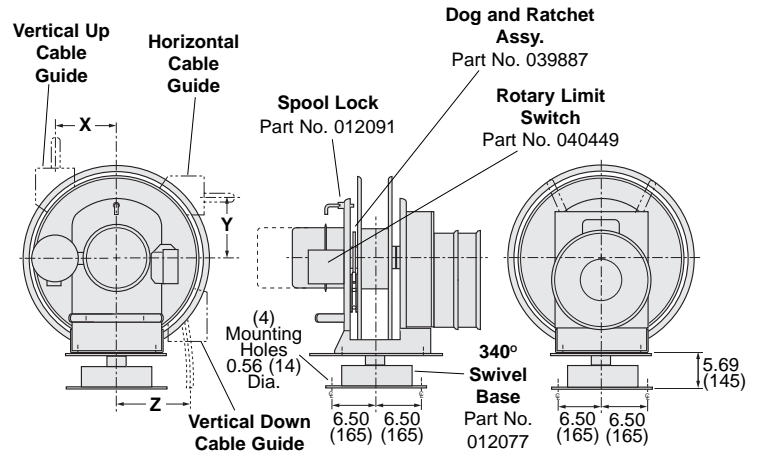
SLIP RING HOUSING DIMENSIONS

Slip Ring Model (Second Series of Digits in Model Number)	23	63	212	103	143	203	303
	33	83	220	123	163	243	363
	43	27	320	312	412		
		37	420				
		47					
"L" Dimension (Series 21 & 24)	15.00	17.50	20.00	22.50	27.50	35.50	
"L" Dimension (Series 28 & 32)	16.00	18.50	21.00	23.50	28.50	36.50	
"M" Dimension (All Series)	8.50	11.00	13.50	16.00	21.00	29.00	

CABLE GUIDE DIMENSIONS AND PART NUMBERS

REEL SERIES	VERTICAL UP CABLE GUIDE		HORIZONTAL CABLE GUIDE		VERTICAL DOWN CABLE GUIDE	
	X	STEEL ROLLERS P/N	Y	STEEL ROLLERS P/N	Z	STEEL ROLLERS P/N
MMD 21	6.38 (162)	034742	6.38 (162)	034742	10.12 (257)	034744
MMD 24	7.00 (178)	034742	7.00 (178)	034742	10.12 (257)	034744
MMD 28	8.12 (206)	034743	8.12 (206)	034743	10.12 (257)	034745
MMD 32	12.50 (318)	034743	11.75 (298)	034743	9.50 (241)	034745

OPTIONAL ACCESSORIES



Cable Guides with Nylon Rollers mounted on Hoops are Part No. 015608 for horizontal, vertical and down on MMD 32 series reels.